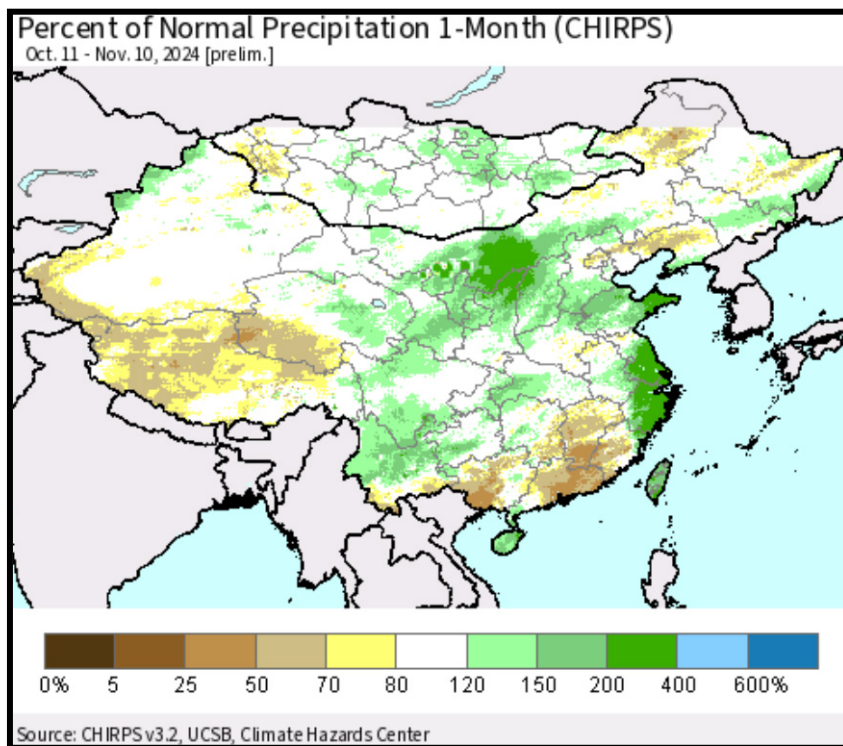


China Winter Wheat, Rapeseed Weather Favorable

By Andrew Owen

Kansas City, November 15 (World Weather Inc.) – [Winter wheat planting should be wrapping up in China's North China Plain, the main producer of wheat in the country. Winter rapeseed planting is ongoing in China's Yangtze River Basin with normal planting dates continuing into December. Timely precipitation in recent weeks helped support relatively favorable establishment conditions in the main winter crop production areas, although portions of the Yangtze River Basin still have some moisture deficits after a long drier biased finish to the growing season.](#) With more rain expected in the coming days, the outlook for the upcoming season will remain favorable. No major planting delays are expected in the Yangtze River Basin due to the additional precipitation.

The main winter wheat areas in the North China Plain and central Yellow River



Basin received near to above normal precipitation during the past month. Rainfall as a percent of normal for the 30-day period ending November 10 ranged from 80% to 200% of normal with pockets that were slightly drier than normal in Henan and northern Anhui. In the Yangtze River Basin, Jiangxi and neighboring locations in Hunan were drier than normal during the past month. However, most rapeseed areas received near to above normal precipitation.

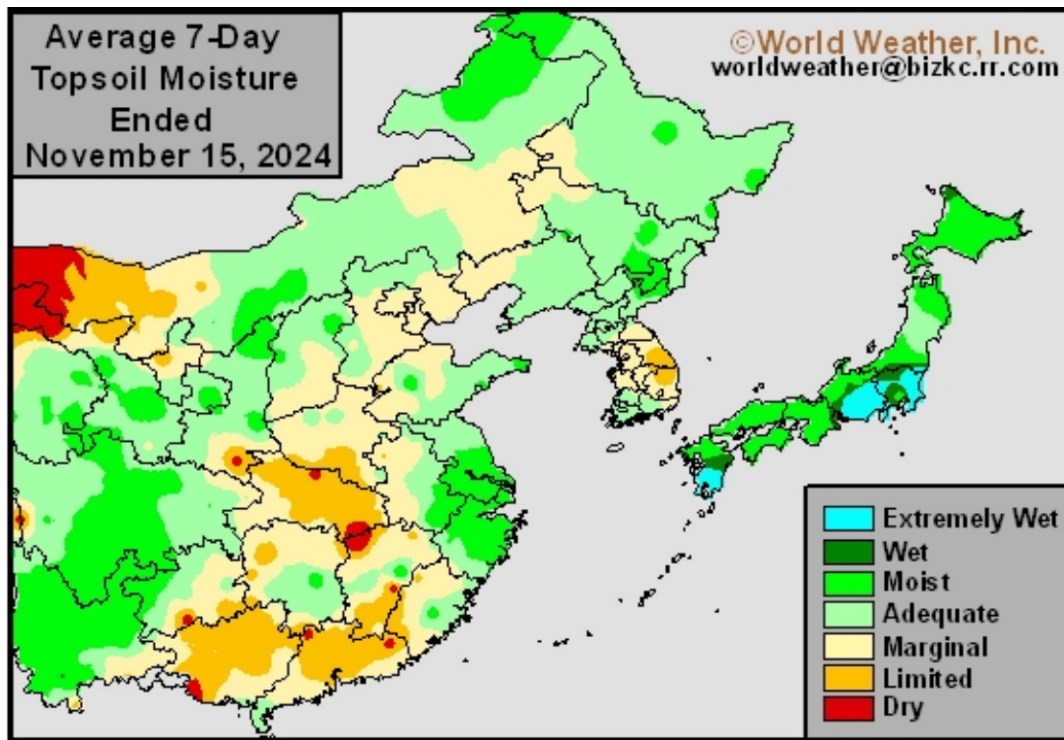
Soil moisture is rated adequate to marginally adequate to marginally adequate in a large section of China. However, [several areas in Hubei, southern Henan, Guangxi, Guangdong, Jiangxi, and neighboring locations had a shortage of moisture leading into this week. Some rain has occurred in the Yellow and Yangtze River Basins this week offering "some" relief, but more rain is needed.](#)

[Winter wheat](#) planting should be complete or nearly complete in the North China Plain and central Yellow River Basin. Planting advanced well this autumn due to a lack of abundant rain and periods of warmer than normal weather. There was enough rain to support relatively good establishment conditions as well. The outlook is favorable for the upcoming season. Soil temperatures are still warm enough to support new growth.

[Winter rapeseed](#) planting is ongoing for the Yangtze River Basin. Early-season planting advanced swiftly despite some periods of erratic rainfall. [Establishment conditions](#)

China Winter Wheat, Rapeseed Weather Favorable

vary with many areas in Hubei becoming too dry to support ideal conditions. There is plenty of time for better rainfall to improve establishment and early-season development conditions before the crops become dormant or semi-dormant.



WEATHER OUTLOOK

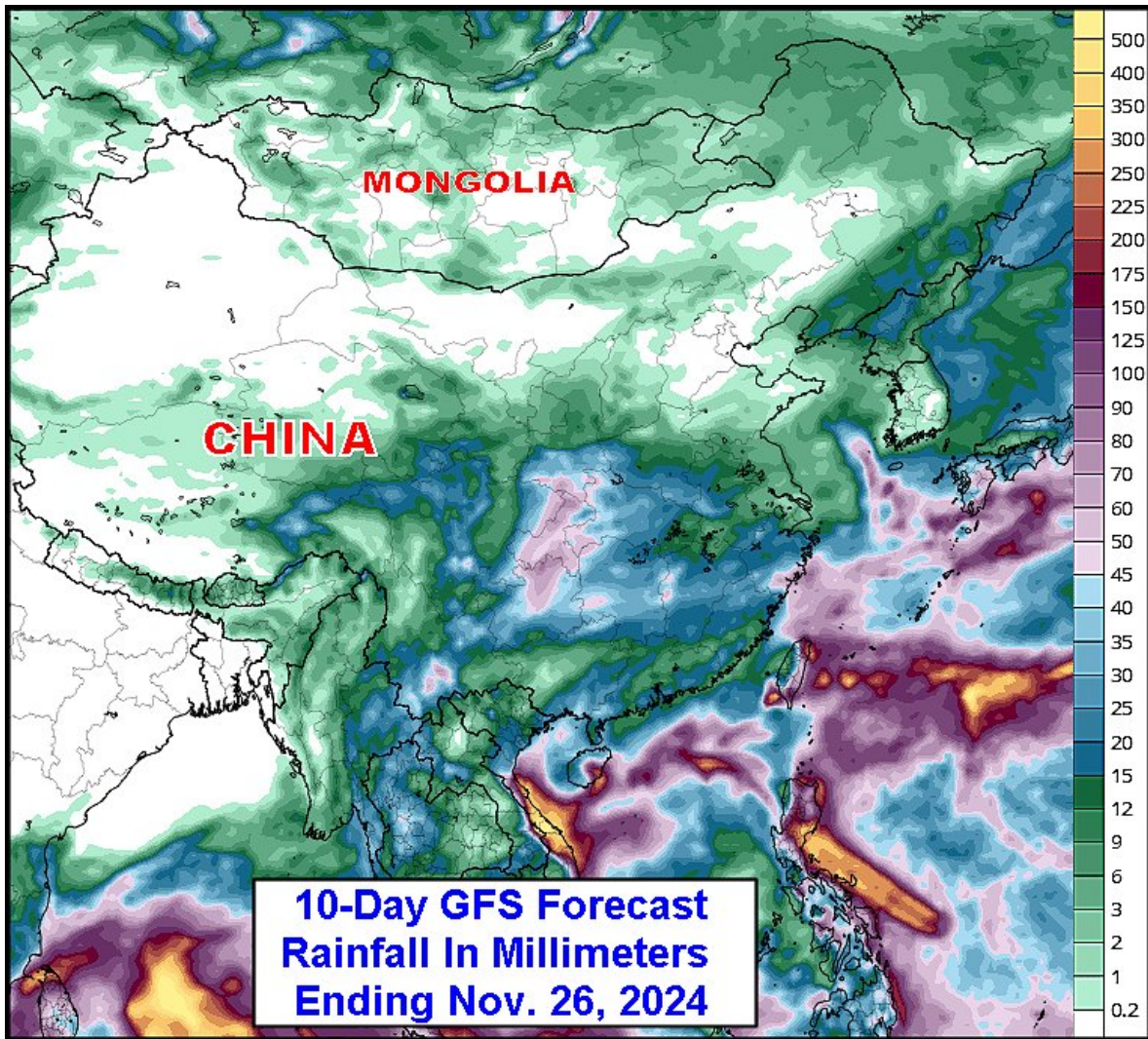
The Yangtze River Basin, North China Plain, and central Yellow River Basin will experience a mix of precipitation and sunshine through the end of next week. Some of the most widespread precipitation will occur through Monday as a frontal boundary advances over northern China. Erratic rainfall will persist for Sichuan, southern Shaanxi, and neighboring locations later next week while the remaining locations are dry. Moisture totals by next Friday morning will range from 0.75 to 3.00 inches with local amounts over 4.00 inches in Sichuan, southern Shaanxi, northern Guizhou, and western Hubei. The remaining locations will receive 0.50 to 2.00 inches of rain, though Hebei, northern Shanxi, and northern Shandong will receive little to no precipitation. The Yangtze River Basin will again see a mix of precipitation and sunshine November 23 – 29. The North China Plain and central Yellow River Basin will otherwise receive little to no precipitation during the second week of the outlook.

Seasonable to seasonably warm weather is slated for the main winter wheat and rapeseed production areas through the end of next week. Daytime highs will peak to the 60s and 70s Fahrenheit with pockets in the 50s today and Saturday. Highs will drop to the 50s and 60s later this weekend and next week with many areas in Shaanxi, Shanxi, and neighboring locations often warming to the upper 30s and 40s. Low temperatures will be in the 40s and 50s Saturday. Most locations will see lows drop to the 30s and 40s for the

China Winter Wheat, Rapeseed Weather Favorable

remainder of the coming week with portions of Shaanxi, Shanxi, and Hebei often cooling to the 20s. Temperatures will be near normal November 23-29.

Rainfall in the coming days will continue to support good conditions for winter wheat establishment in the North China Plain and neighboring locations. The gradual cooling trend will likely cause wheat to go dormant or semi-dormant later this month. Crop prospects will remain favorable across the region. Planting and establishment conditions will either improve or remain favorable for the main winter rapeseed areas in the Yangtze River Basin as well. Rapeseed prospects will also remain favorable.



World Weather, Inc. forecasts and comments pertaining to present, past and future weather conditions included in this report constitute the corporation's judgment as of the date of this report and are subject to change without notice. Comments regarding damage or the impact of weather on agricultural and energy as well as comments made regarding the impact of weather on the commodity and financial markets are the explicit opinions of World Weather, Inc. World Weather, Inc. can not be held responsible for decisions made by users of the Corporation's information in any business, trade or investment decision.

China Winter Wheat, Rapeseed Weather Favorable

©2024 World Weather, Inc. Any unauthorized redistribution, duplication or disclosure is prohibited by law and will result in prosecution.