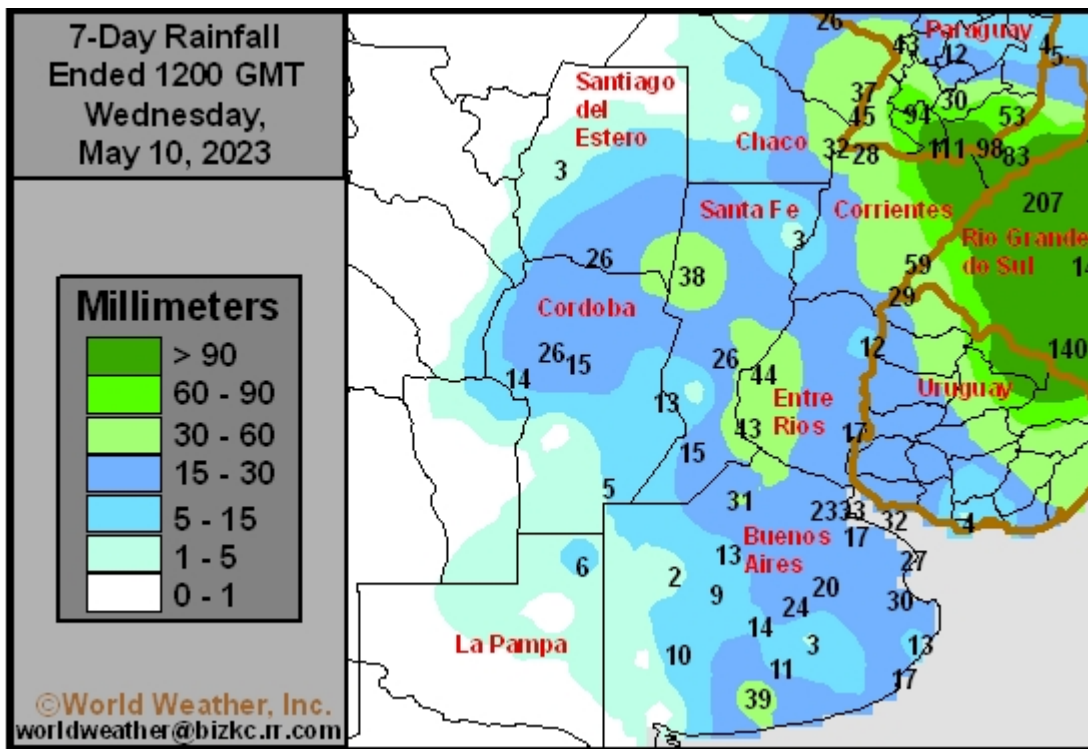


Argentina Wheat Areas To Ge Moisture In Late May, June

By Andrew Owen and Drew Lerner

Kansas City, May 12 (World Weather Inc.) – Rain was noted in portions of Argentina’s Pampas farming region during the past week. The precipitation may have slowed harvesting and fieldwork at times, though producers still had opportunities to get into the fields between rain events. Harvest conditions through the middle of next week will improve as dry weather dominates because of high pressure off the Pacific coast of South America. *Weather patterns are expected to begin changing in the last ten days of this month with rain expected to fall again. Follow up precipitation will occur in early June as well. If the forecast is correct planting moisture will be improved for the bulk of the planting season which occurs in June.*

Rainfall varied across the main production areas in Argentina during the past week. Santa Fe, Entre Rios, Corrientes, southeastern sections of Chaco and Formosa, and the eastern two-thirds of Buenos Aires reported 0.35 to 1.77 inches of rain for the seven-day period ending this morning. Southern Santiago del Estero and the northern half of Cordoba received 0.55 to 1.02 inches of rain. Pockets in La Pampa, western Buenos Aires, and southeastern Cordoba received up to 0.51 inch of rain. The remaining production areas received little to no rain.

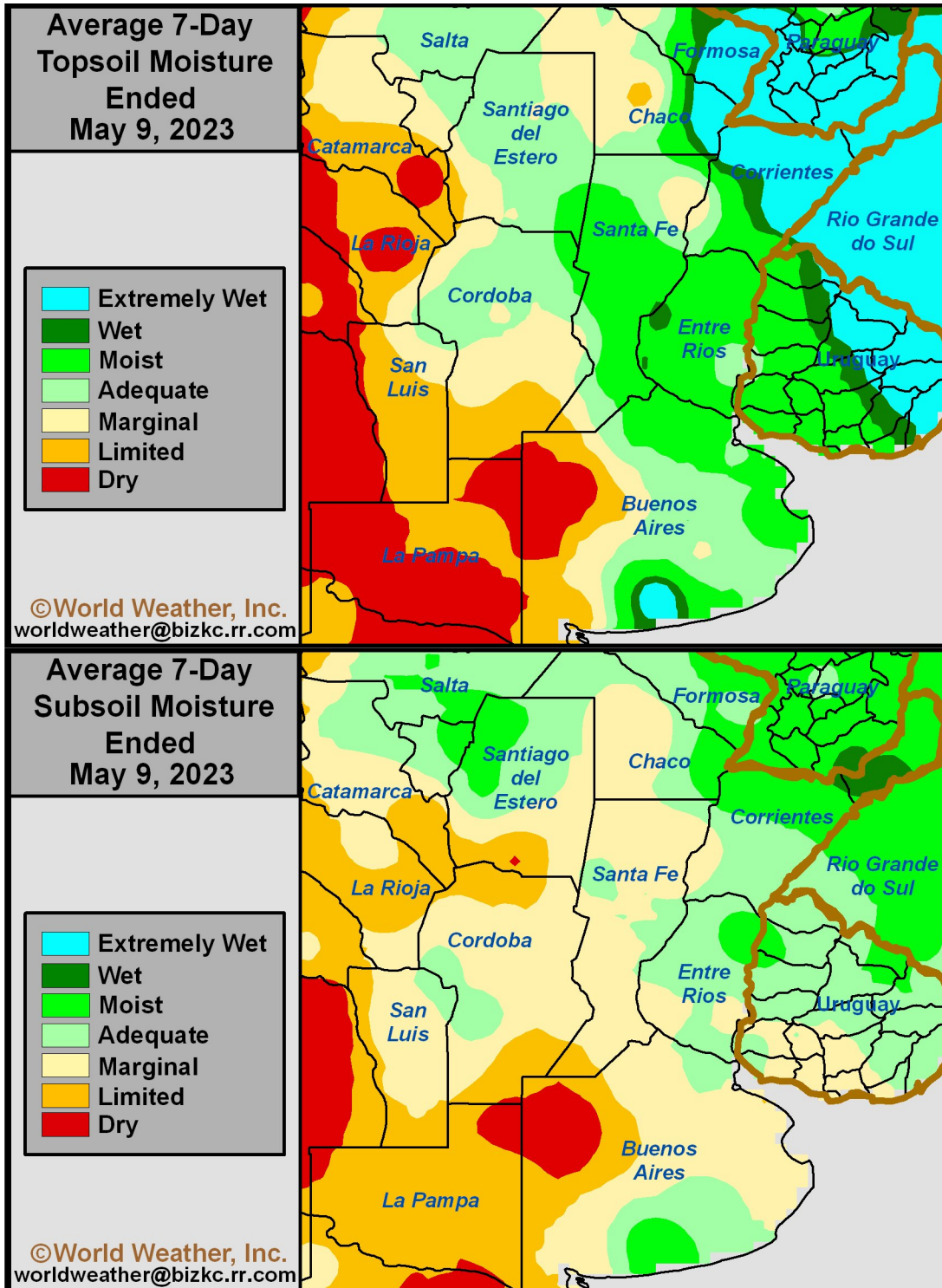


La Pampa and immediate neighboring areas in Cordoba and Buenos Aires still have short to critically short soil moisture. The remaining locations have marginally adequate to adequate moisture due to the periodic rain in recent weeks.

As of May 4, soybean harvesting in Argentina was 46% complete, down from 62% at this time last year. Corn harvesting was approximately 28% complete, down from 38%

Argentina Wheat Areas To Ge Moisture In Late May, June

this time last year. Sorghum harvesting was 16% complete and rice harvesting was 92% finished. The cotton harvest was 25% finished while sunseed harvesting was mostly finished.

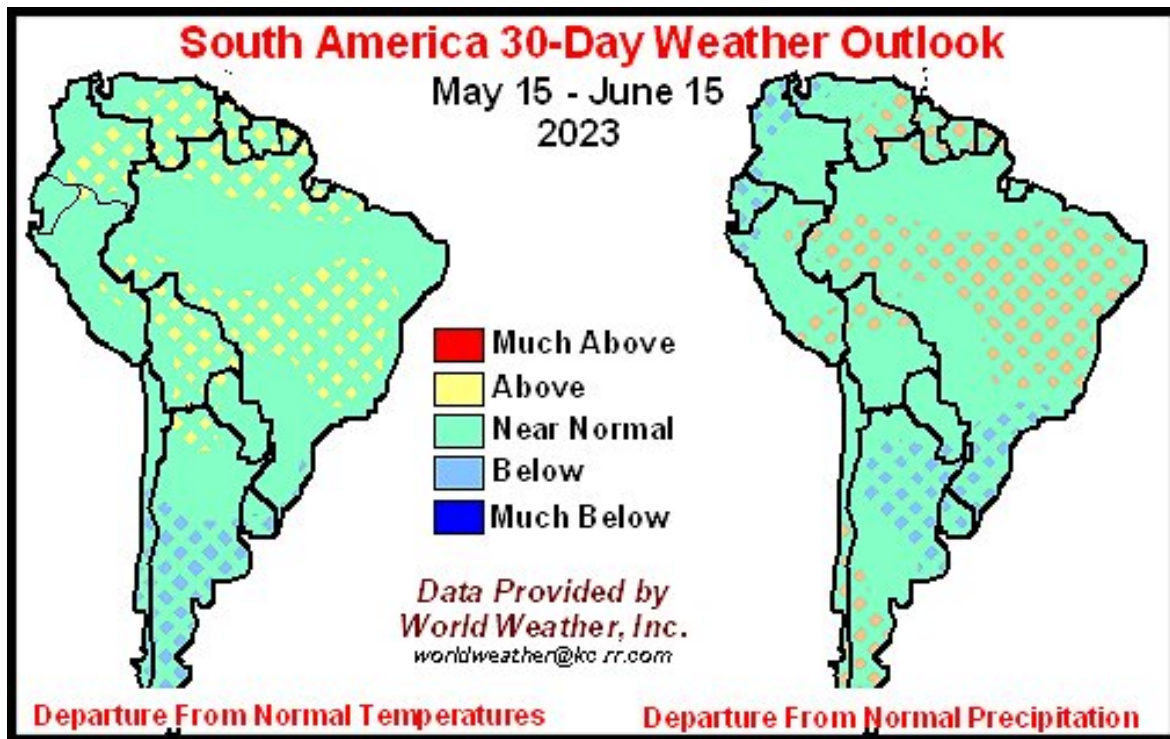


Argentina Wheat Areas To Ge Moisture In Late May, June

The main need going forward is drier weather to finish the soybean and corn harvest with few disruptions or quality impacts. Production potentials remain below normal due to the poor growing conditions this season. In the meantime, winter wheat planting normally begins during the second half of May and continues into early July for Argentina. While several production areas currently have some moisture to support generally favorable establishment, more rain is needed to promote better long-term development.

Drier-than-normal weather is slated for much of Argentina during the coming week. A high-pressure ridge will build over the southeastern Pacific Ocean in the coming days before moving inland over South America this weekend and early next week. A disturbance could then help weaken the ridge and generate erratic rainfall Tuesday, though resulting rainfall will likely be too light to counter evaporation or impact long-term soil conditions. [A more zonal upper-level wind pattern is expected May 18 – 24 that will allow for periods of rain in the main production areas.](#)

The temperature profile for Argentina will trend near to above normal through next Wednesday. Daytime highs through Friday will reach the 60s and 70s Fahrenheit. Highs over the weekend through the middle of next week will generally increase to the 70 and 80s. Low temperatures will be in the 40s and 50s with pockets in western and northern Argentina only cooling to the 60s this weekend and early next week.



[The lack of rain and warm weather will promote nearly ideal harvest conditions for much of Argentina through the middle of next week. Producers will be able to make significant progress in the harvest with no additional quality impacts.](#) Early-season winter wheat planting may get off to a good start due to the lack of rain. However, net drying is slated for much of the country and many areas will become too dry to support ideal establishment and short-term growth. Producers may wait for better rain before putting a significant amount of wheat in the ground.

Argentina Wheat Areas To Ge Moisture In Late May, June

World Weather, Inc. forecasts and comments pertaining to present, past and future weather conditions included in this report constitute the corporation's judgment as of the date of this report and are subject to change without notice. Comments regarding damage or the impact of weather on agricultural and energy as well as comments made regarding the impact of weather on the commodity and financial markets are the explicit opinions of World Weather, Inc. World Weather, Inc. can not be held responsible for decisions made by users of the Corporation's information in any business, trade or investment decision.

©2023 World Weather, Inc. Any unauthorized redistribution, duplication or disclosure is prohibited by law and will result in prosecution.