

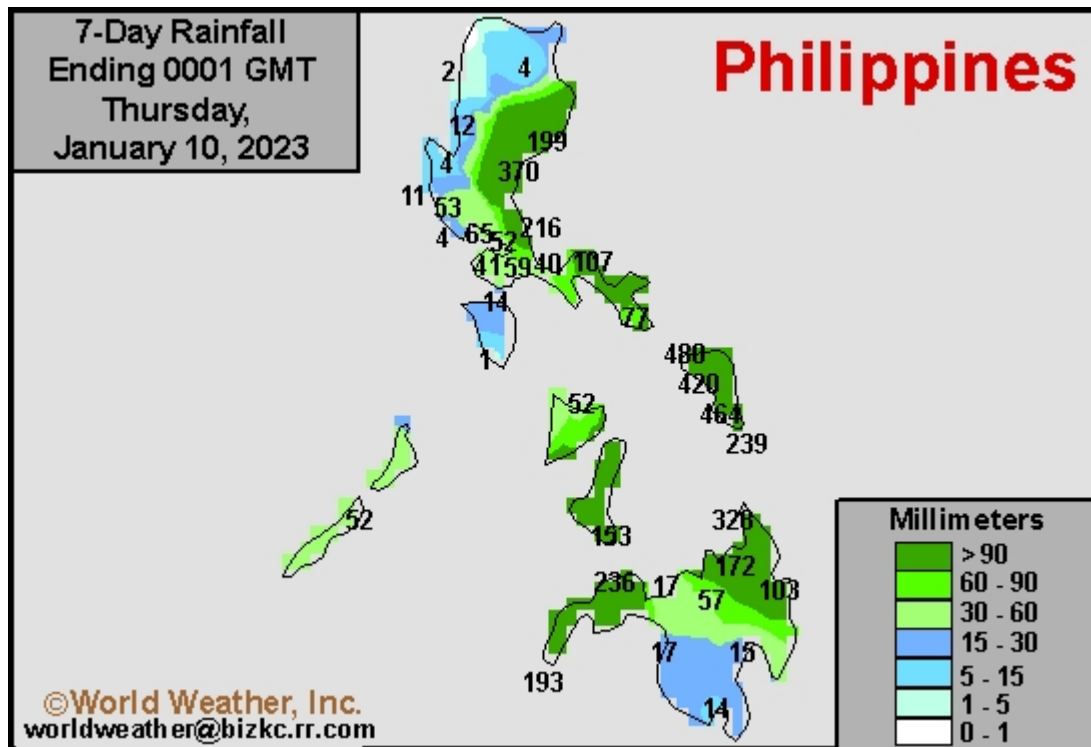
Eastern Philippines To See Additional Waves Of Heavy Rain

By Andrew Owen

Kansas City, January 12 (World Weather Inc.) – [Samar Island, eastern sections of Luzon Island, and northern Mindanao have been inundated with rain in recent weeks.](#)

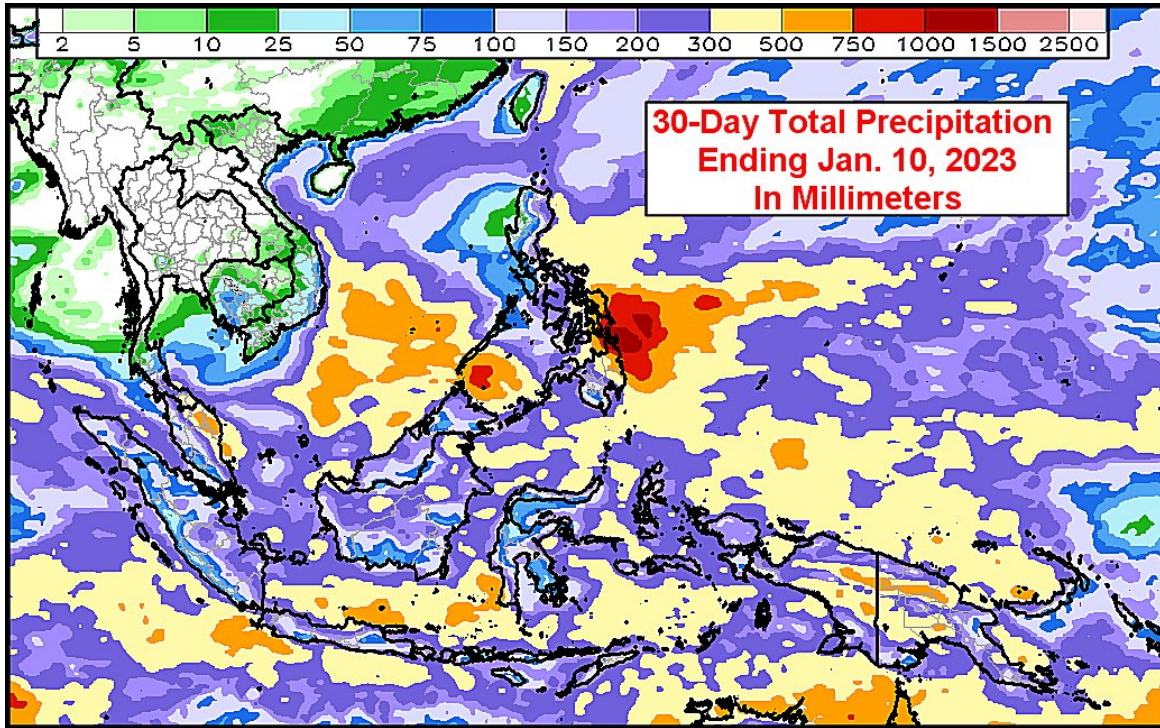
The ground is saturated across the country with exceptions in western portions of Luzon where rainfall has been much lighter. [Flooding and landslides have been a frequent occurrence and the need for drier weather is high.](#) The impact of heavy rain may be negative on rice, corn, tea, sugarcane and many herbs and spices, but the deeper rooted tree crops like coconut, oil palm, rubber, coffee and cocoa have not likely been seriously impacted. [Most of the excessive rain has been associated with a strong northeast monsoon flow, but a weak tropical disturbance may reach Samar, southeastern Luzon and immediate neighboring areas in coming days to enhance rainfall and potential flooding.](#) Mindanao and the Visayan Islands will also receive abundant rain keeping the ground excessively wet.

Rainfall varied significantly across the Philippines during the past week. Samar Island reported the most significant rain with totals ranging from 9.41 to 18.90 inches for the seven-day period ending this morning. Southeastern and east-central Luzon Island and northern and western Mindanao received 3.03 to 14.57 inches of rain. Other areas in the Visayan Islands along with portions of southern and central Luzon and central Mindanao received 0.59 to 2.56 inches of moisture. In contrast, southern Mindanao and the remaining portions of Luzon received 0.16 to 0.59 inch of rain with drier pockets in northwestern Luzon.



Eastern Philippines To See Additional Waves Of Heavy Rain

The wet weather pattern has been consistent for Samar Island, southeastern Luzon Island, and northeastern Mindanao for the past month. These areas received an estimated 19.69 to 39.37 inches of rain for the 30-day period ending January 10. Locally greater amounts were suspected.



The ground is saturated across a large section of the Philippines with exceptions in western Luzon Island where the ground is short to very short of moisture. The torrential rain has led to severe flooding and landslides in the wettest locations of Samar Island and Luzon. Most crops have been impacted by the wet bias; including rice, corn, sugarcane, tea and many herbs and spices. Any of the region's short-rooted crops were vulnerable to damage because of excessive moisture. Tree crops, though, were less impacted, although too much moisture and limited sunshine can hurt them as well. Most of the region's coffee, cocoa citrus, rubber, coconut and oil palm production has not been seriously impacted except in the few instances of serious damage from landslides.

A weak tropical disturbance will reach the eastern Philippines overnight tonight and meander around the region Friday into this weekend. The disturbance is not expected to intensify into an organized tropical system, but it will still promote periods of torrential rain for Samar Island and southeastern Luzon Island through Sunday morning. Erratic rainfall will persist on a frequent basis later Sunday into the middle of next week as well. **Moisture totals by next Thursday morning will range from 5.00 to 10.00 inches and local amounts of 15.00 inches or more. The rainfall will continue to promote severe flooding and potentially landslides, most notably through the end of the weekend. Additional crop and structural damage is expected.** Ocean travel, including the shipment of goods and services, may also be diverted around the tropical disturbance.

The remaining portions of the Philippines will see a mix of erratic rain and sunshine during the coming week. Mindanao and the remaining portions of the Visayan Islands into

Eastern Philippines To See Additional Waves Of Heavy Rain

eastern and the remaining portions of southern Luzon will receive 1.50 to 5.00 inches of rain with local amounts of 8.00 inches or more along the eastern Luzon coastline.

The remaining portions of Luzon will be drier biased. Periods of rain are still expected with pockets receiving 0.50 to 2.00 inches. Most locations will not receive enough rain to counter evaporation or impact long-term soil conditions. The rain should be spread out enough to limit severe flooding in most locations. Crop conditions will be mostly favorable, even in the drier areas of western Luzon.

The wet weather bias will likely persist into at least the January 20 – 26 period for the Philippines. The rain will keep the ground saturated and may promote additional flooding in the wettest areas of Samar Island, Luzon Island, and neighboring locations. Production potentials may be reduced further due to the ongoing threat for severe flooding.

World Weather, Inc. forecasts and comments pertaining to present, past and future weather conditions included in this report constitute the corporation's judgment as of the date of this report and are subject to change without notice. Comments regarding damage or the impact of weather on agricultural and energy as well as comments made regarding the impact of weather on the commodity and financial markets are the explicit opinions of World Weather, Inc. World Weather, Inc. can not be held responsible for decisions made by users of the Corporation's information in any business, trade or investment decision.

©2023 World Weather, Inc. Any unauthorized redistribution, duplication or disclosure is prohibited by law and will result in prosecution.