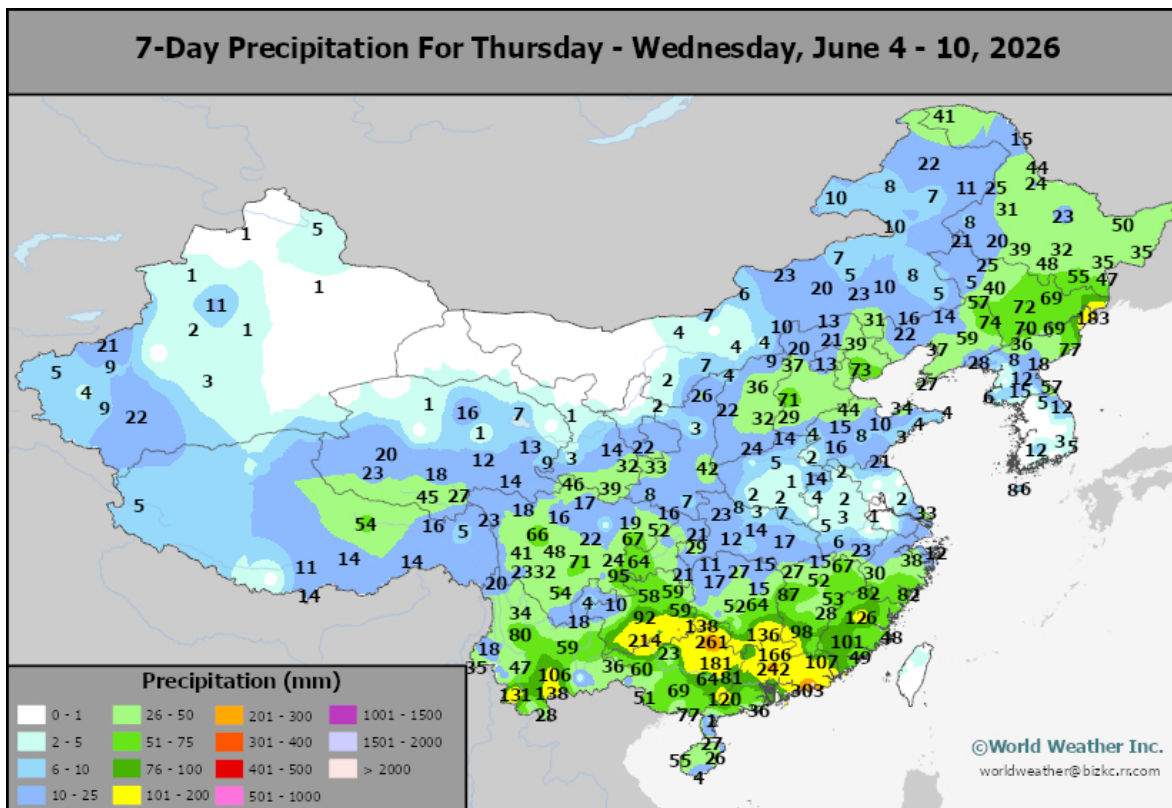


Southern China Flood Potential Rises; East-Central China Drying

By Andrew Owen

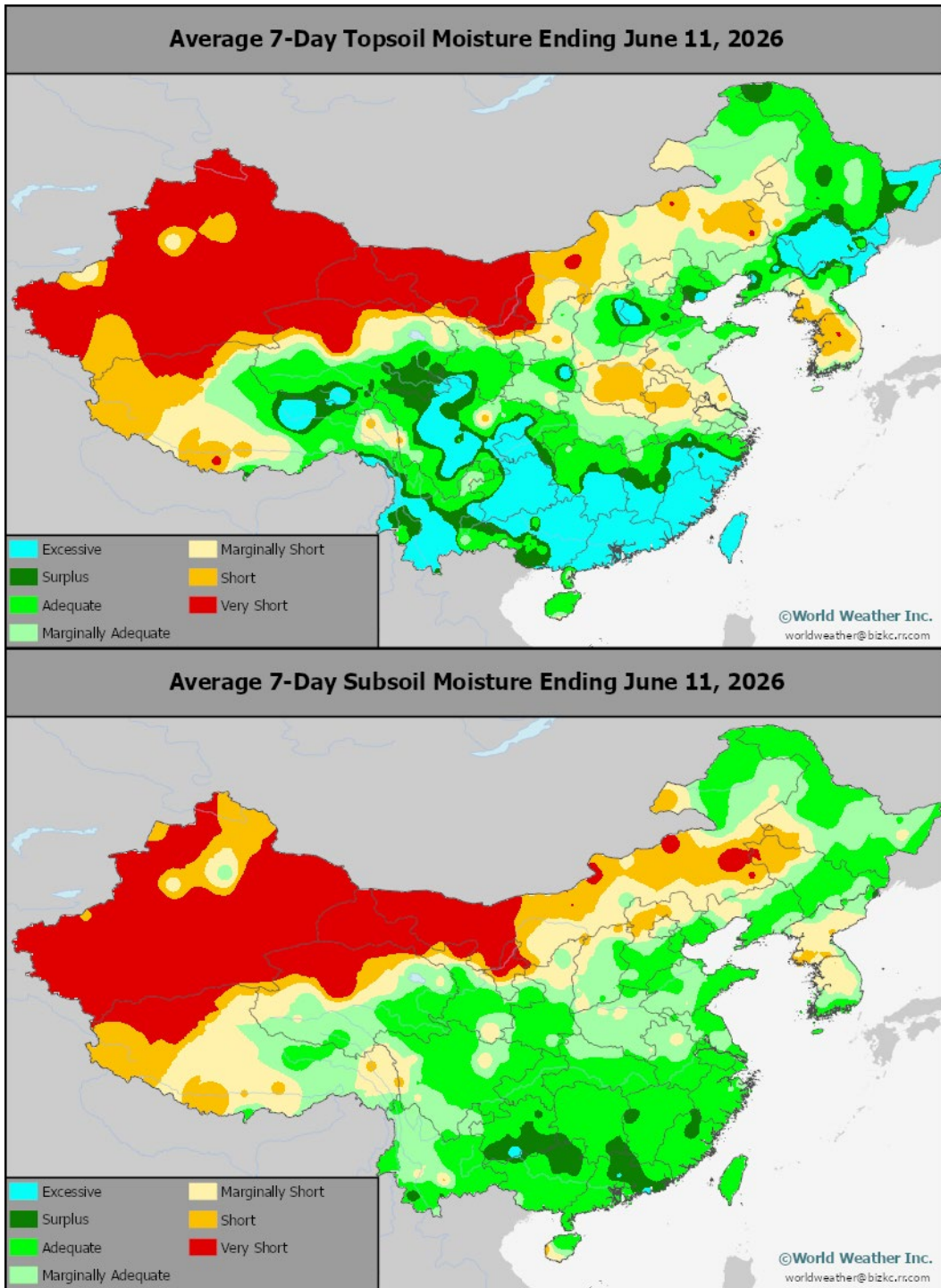
Kansas City, June 12 (World Weather Inc.) – Rain fell in much of China’s main production areas during the past week with two areas of concern. First, *southern China received excessive rainfall in several areas resulting in flooding that may have impacted parts of the nation’s rice and sugarcane as well as some minor corn, soybean and groundnut crops. The production impact due to flooding should have been minimal. The other weather issue that has been evolving involves less than usual rainfall in east-central China; including southern portions of the North China Plain. This region includes southern Shandong, Henan, Jiangsu, Anhui and some immediate neighboring areas and the prospects for rain in this region are poor while temperatures rise above normal. Some stress to summer crops produced in east-central China is likely as the dryness festers into late June.*

Rainfall varied significantly across China’s main production areas during the past week. *Several areas in Guangdong, Fujian, Guangxi, Yunnan, Guizhou, and southern sections of Hunan and Jiangxi reported 1.50 to 7.13 inches of rain with local amounts approaching 12.00 inches in Guangdong and Guangxi for the seven-day period ending June 10.* Sichuan, other areas in Hunan and Jiangxi, Zhejiang, Shanxi, Hebei, Liaoning, Jilin, and Heilongjiang received 0.43 to 3.50 inches of rain. The remaining production areas received 0.20 to 1.00 inch of rain with drier pockets in Henan, Anhui, and Jiangsu.



Southern China Flood Potential Rises; East-Central China Drying

Top and subsoil moisture is excessively great making the potential for flooding very high from Guizhou to Guangdong and a few neighboring areas. **Additional rain is expected in these areas raising the potential for more serious flooding in the near future since rain will continue fall frequently and abundantly.**

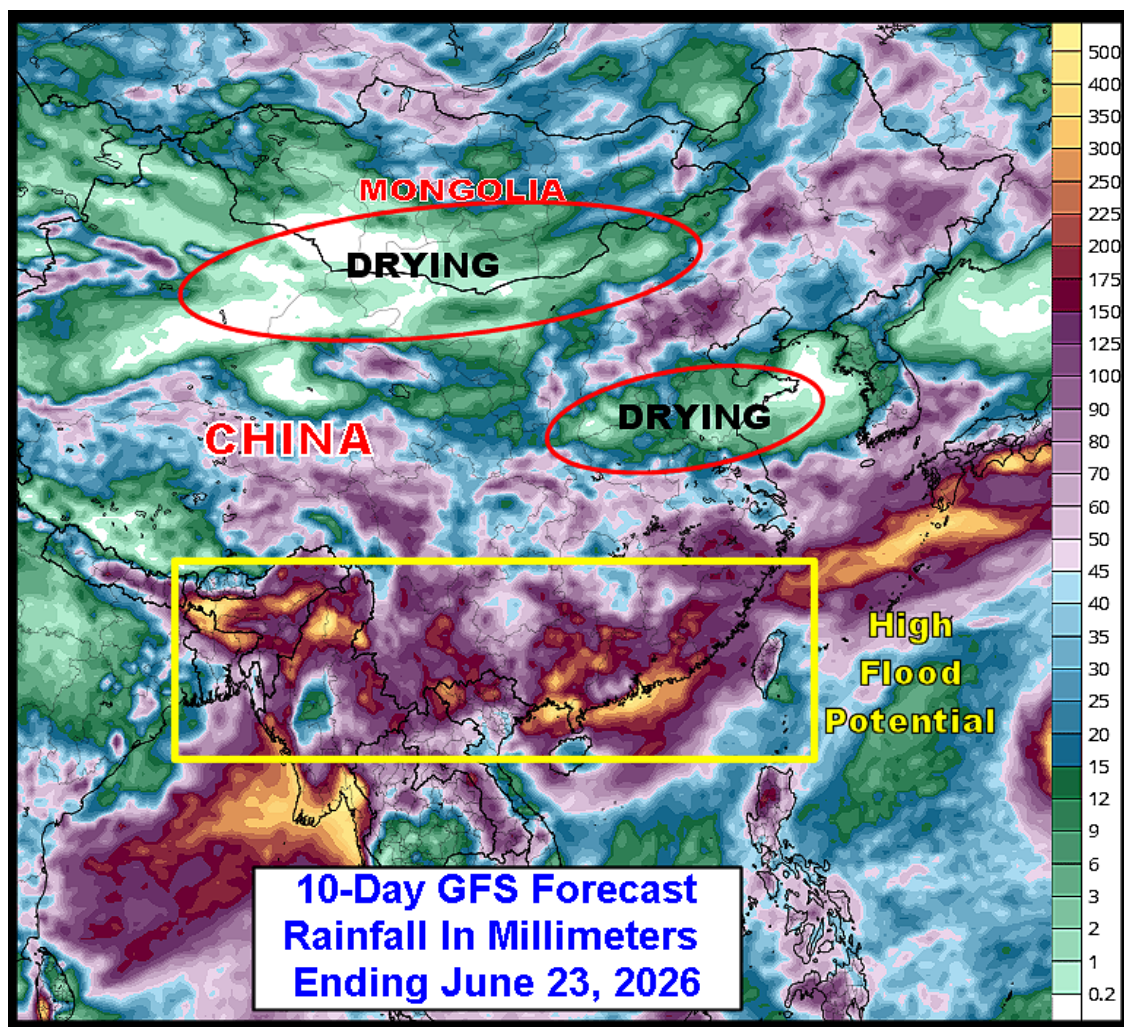


Southern China Flood Potential Rises; East-Central China Drying

In contrast, soil conditions in Inner Mongolia are quite dry in both the top and subsoil which may lead to some crop stress very soon if it has not already. Rain is needed in this region where spring wheat and sugarbeets are produced along with other crops.

Drying is also occurring in east-central China with areas from Shandong and Jiangsu and northwest to the middle Yellow River Basin experiencing marginally short to short topsoil moisture and marginally adequate to slightly short subsoil moisture. These areas are not too dry today, but the ground is firming and another week to ten days of dry and warm weather will quickly bring on some short to very short conditions stressing unirrigated crops. Winter wheat harvesting otherwise advanced swiftly in the North China Plain due to the lack of abundant rain.

Other production areas either received enough rain or had enough moisture to support relatively favorable conditions for grain, oilseed, cotton, and other crop development during the past week.



WEATHER OUTLOOK

Precipitation will again vary across China through the end of next week. The wet weather pattern will persist in the south with rain occurring on a near daily basis.

Southern China Flood Potential Rises; East-Central China Drying

Moisture totals by next Friday morning will range from 3.00 to 7.00 inches and local amounts of 10.00 inches or slightly more. Waves of rain will persist June 20 – 26 as well. **The ground will remain saturated and additional flooding will be possible. Significant crop and structural damage will be possible due to the excess moisture. Fieldwork will likely be slowed or delayed as well.**

Other production areas will see a mix of rain and sunshine through the end of next week. **Northeast China, Hebei, Shanxi, central Inner Mongolia, and areas immediately south of the Yangtze River will see some of the most frequent and significant rain.**

Moisture totals by next Friday morning will range from 0.75 to 4.00 inches with drier pockets.

Areas immediately north of the Yangtze River and the remaining locations in the North China Plain and central Yellow River Basin will trend drier than usual. Periods of spotty rain will occur, though most locations will not receive enough rain to counter evaporation or impact long-term soil conditions.

Northern China will continue to see waves of rain June 20 – 26. The North China Plain, central Yellow River Basin, and Yangtze River Basin will also see a mix of rain and sunshine.

Temperatures through the end of next week will trend near to above normal in much of China outside portions of the Northeast Provinces. Highest readings will reach the 80s and 90s Fahrenheit from southern China and the Yangtze River Basin into the North China Plain and central Yellow River Basin, though many areas will only warm to the 70s during periods of more significant rain. Northern China will see highest readings in the 70s and 80s. Seasonable to seasonably warm weather will persist June 20 – 26.

Late-season winter wheat harvesting in the North China Plain will advance swiftly due to the lack of abundant rain in the coming week. However, many areas in the North China Plain, Shaanxi, and areas immediately north of the Yangtze River will dry down significantly due to the lack of rain and warm daytime temperatures. No significant production impacts are expected, though the need for timely rain will increase later this month. Rainfall during the second week of the outlook may alleviate some of the dryness, but not enough to completely fix the drying trend.

Northern China and areas immediately south of the Yangtze River will receive enough rain to maintain a good environment for aggressive growth.

World Weather, Inc. forecasts and comments pertaining to present, past and future weather conditions included in this report constitute the corporation's judgment as of the date of this report and are subject to change without notice. Comments regarding damage or the impact of weather on agricultural and energy as well as comments made regarding the impact of weather on the commodity and financial markets are the explicit opinions of World Weather, Inc. World Weather, Inc. can not be held responsible for decisions made by users of the Corporation's information in any business, trade or investment decision.

©2026 World Weather, Inc. Any unauthorized redistribution, duplication or disclosure is prohibited by law and will result in prosecution.