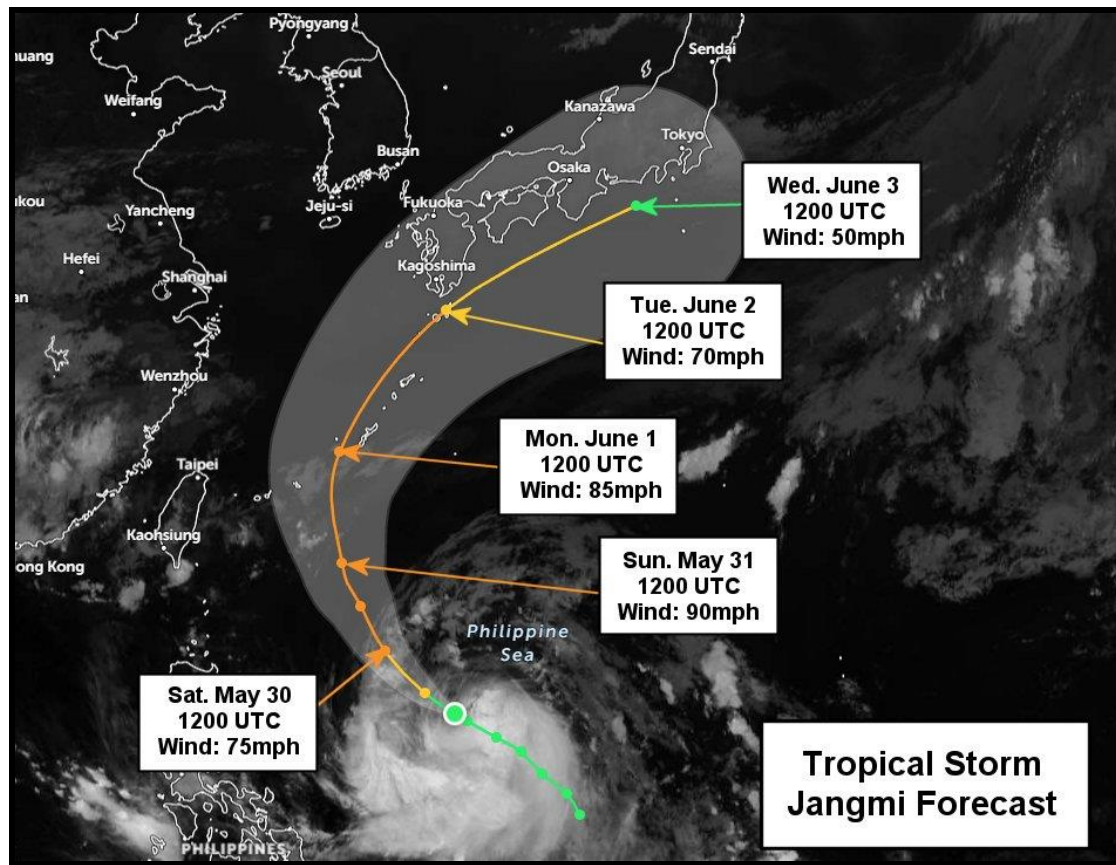


Tropical Storm Jangmi Intensifies Over Philippine Sea

By Scarlett Waters

Kansas City, May 29 (World Weather Inc.) – [Tropical Storm Jangmi continues to intensify over the open Philippine Sea. At 1500 UTC, maximum sustained winds were at 50 mph and moving west-northwest at 14 mph. Jangmi is currently expected to peak with wind speeds near 90 mph this weekend over the open ocean, making it equivalent to a strong category 1 hurricane on the Saffir-Simpson scale. The storm will impact the Ryukyu Islands with maximum sustained wind speeds between 70 and 85 mph. Heavy rainfall, a storm surge, and high wind speeds will accompany the storm. Jangmi will gradually weaken over the course of next week, but will graze the southern coasts of Kyushu, Shikoku, and Honshu, bringing adverse conditions as well. A close watch on Jangmi will be needed for any changes in the projected track and for those with interests in Japan.](#)

As of 1500 UTC, **Tropical Storm Jangmi (Domeng)** was located over the Philippine Sea near 16.8 north latitude and 131.3 east longitude; roughly 685 miles south-southeast of Okinawa, Japan and 695 miles east-northeast of Manila, Philippines. **Maximum sustained wind speeds were near 50 mph and was last moving west-northwest at 14 mph.** Jangmi is expected to remain over open waters until Monday, though rough sea conditions may impact eastern portions of the Philippines over the weekend.



Tropical Storm Jangmi Intensifies Over Philippine Sea

Current weather forecast models are indicating that Jangmi will peak in intensity over the central Philippine Sea over the weekend, with maximum sustained wind speeds nearing 90 mph; equivalent to a strong category 1 hurricane on the Saffir-Simpson scale. By Monday, **Jangmi is expected to curve north-northeasterly and impact the Ryukyu Islands, with category 1 hurricane conditions expected. Heavy rainfall, rough ocean conditions, and high wind speeds will be expected across the islands, though the storm is expected to continue gradually weakening as it enters the cooler waters south of Japan. Jangmi will at graze the southern coasts of Kyushu, Shikoku, and Honshu, though it is still possible that the storm could make direct landfall near Kagoshima or other portions of the southern coast of Japan as a strong tropical storm. At present, crop impacts to rice and sugarcane in the region not fully certain until the storm approaches Japan. Shipping delays to and from Japan will be likely next week until the storm subsides. A very close watch on this storm will be needed for those with interest in the Ryukyu Islands or mainland Japan in the next week.** Jangmi will move eastward out into the open Pacific by late next week as a post-tropical cyclone and will no longer be a direct threat to land.

World Weather, Inc. forecasts and comments pertaining to present, past and future weather conditions included in this report constitute the corporation's judgment as of the date of this report and are subject to change without notice. Comments regarding damage or the impact of weather on agricultural and energy as well as comments made regarding the impact of weather on the commodity and financial markets are the explicit opinions of World Weather, Inc. World Weather, Inc. can not be held responsible for decisions made by users of the Corporation's information in any business, trade or investment decision.

©2026 World Weather, Inc. Any unauthorized redistribution, duplication or disclosure is prohibited by law and will result in prosecution.