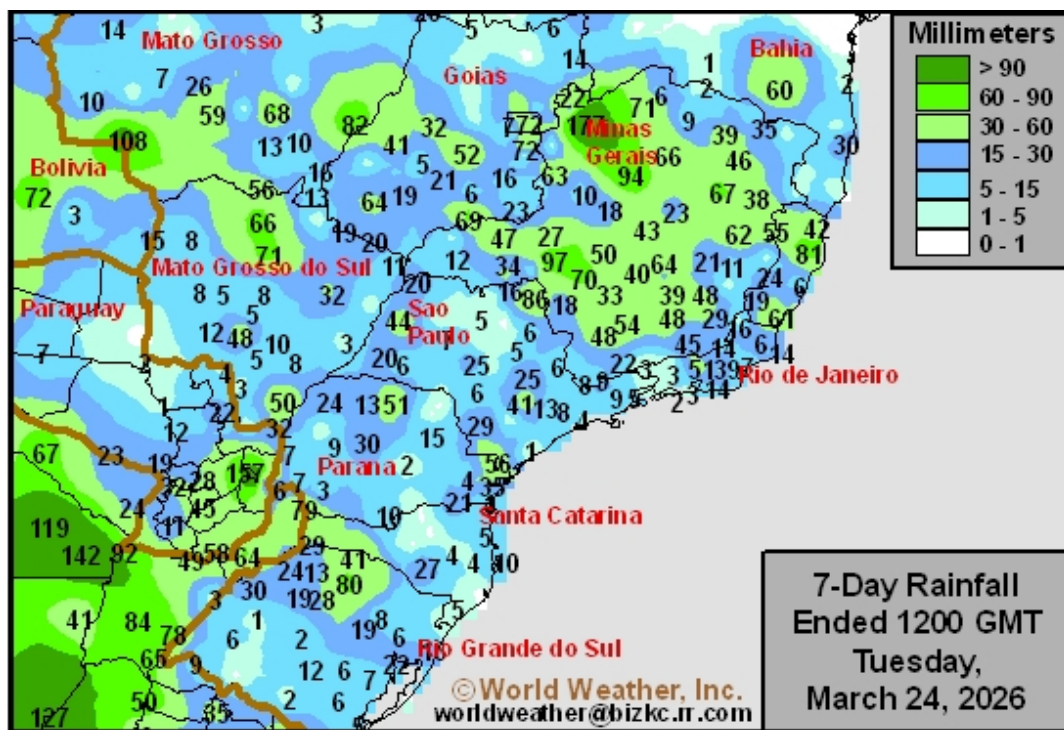


Brazil Safrinha Corn Moisture Favorable With More Coming

By Andrew Owen

Kansas City, March 24 (World Weather Inc.) – Waves of erratic rain were noted in much of Brazil’s crop country during the past week. Safrinha corn planting is over 90% complete and will be finishing up in the coming days. Establishment and early-season development conditions are favorable and will remain favorable as timely rain continues in the coming week. There will still be a need for timely rain in April to support ideal long-term production potentials. Soybean and first-season corn harvesting are also advancing across the country. The harvest will likely advance around periods of erratic rain in coming days.

Minas Gerais, Goiás, Mato Grosso, and northern Mato Grosso do Sul received some of the most significant rain in Brazil during the past week. Moisture totals for the seven-day period ending this morning ranged from 0.50 to 3.25 inches with local amounts up to 7.00 inches in northwestern Minas Gerais. Other locations received 0.32 to 2.00 inches of rain with pockets that only received trace amounts to 0.25 inch. A few locations in northern Rio Grande do Sul and western Santa Catarina also reported up to 3.15 inches of rain.

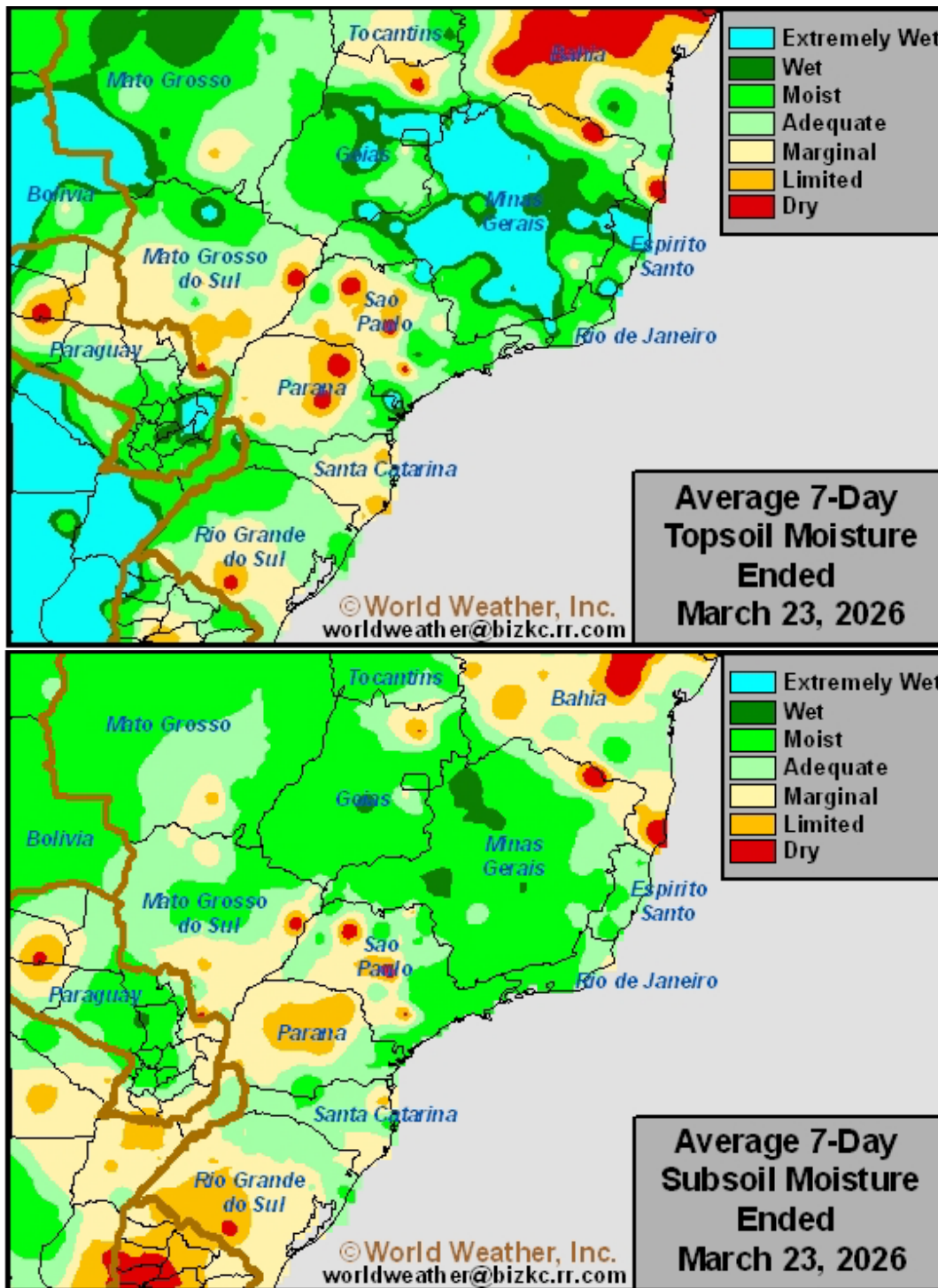


Soil moisture is rated adequately with a few exceptions. Many areas in Bahia and pockets in southern Brazil and southern Mato Grosso have a slight shortage of moisture. Several locations in Minas Gerais are also excessively wet in the topsoil.

As of March 21, Safrinha corn planting was 91.6% complete, up slightly from 90.7% for the previous five-year average. Producers should finish planting in the next week or two despite additional rain. The environment has been favorable for establishment and early-season development in the main production areas of center-west and center-south Brazil. However, there is still some concern that a few of the southern

Brazil Safrinha Corn Moisture Favorable With More Coming

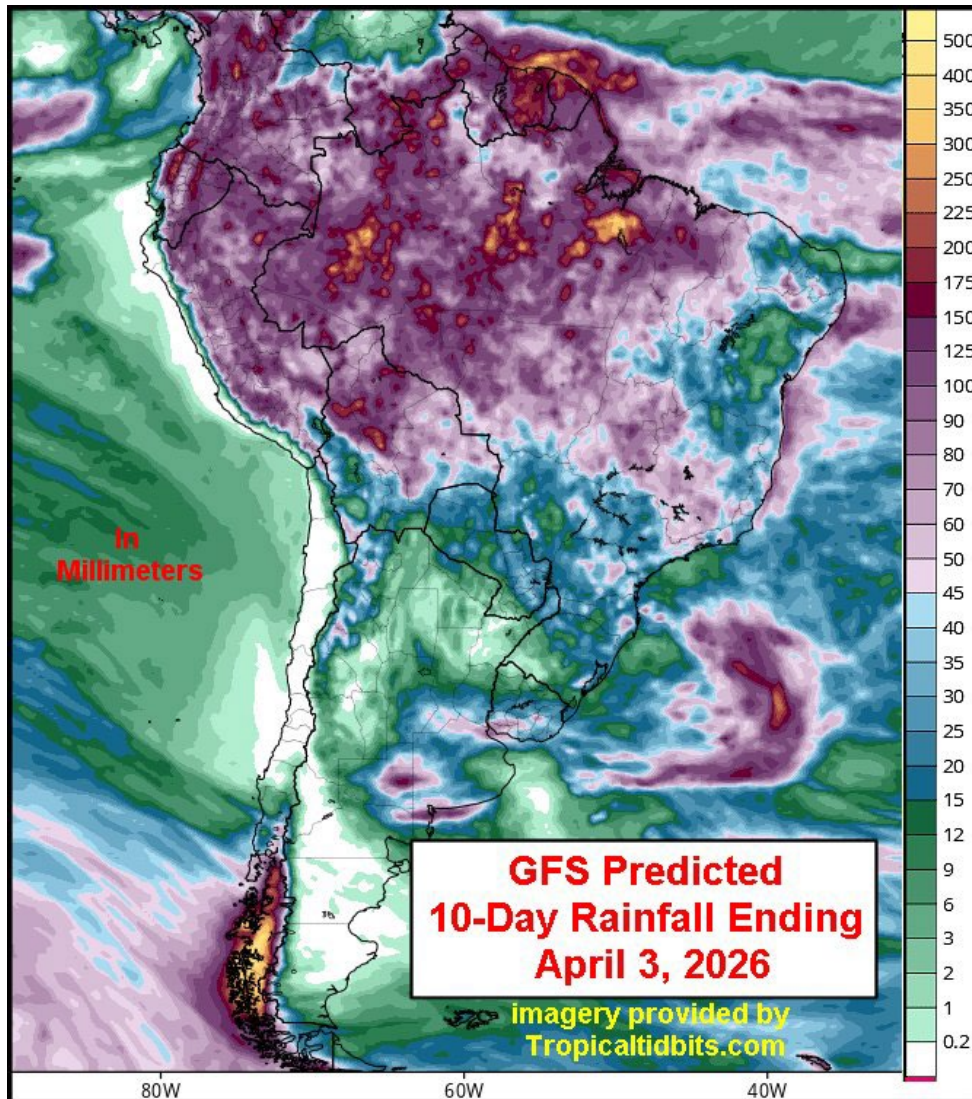
crop areas may not have enough moisture to sustained ideal long-term development. Timely rain will be needed in the coming weeks.



Harvesting of the early-planted crops is ongoing across Brazil. As of March 21, soybean harvesting was 67.7% complete, up slightly from 66.4% for the previous five-year average. First-season corn harvesting was 38.0% finished, down slightly from 39.5% for the previous five-year average. Dry bean harvesting was 66.6% complete while rice harvesting

Brazil Safrinha Corn Moisture Favorable With More Coming

was 34.9% finished. Producers have been able to harvest aggressively despite the waves of erratic rainfall.



WEATHER OUTLOOK

Brazil's main production areas will continue to see a mix of erratic rain and sunshine during the coming week. Scattered showers will evolve for a large section of crop country on a frequent basis through Friday as a disturbance slowly passes over the region. Another disturbance will promote erratic rainfall in southern Brazil and neighboring areas over the weekend and early next week. Light rain will also occur from Mato Grosso into northeastern Brazil. Moisture totals by next Tuesday morning will range from 0.50 to 3.00 inches with drier pockets in southern Brazil, southern Mato Grosso do Sul, and southern Sao Paulo. Erratic rainfall will continue on a frequent basis for center-west, center-south, and northeastern Brazil April 1 – 7. Southern Brazil will otherwise see a mix of rain and sunshine.

Brazil Safrinha Corn Moisture Favorable With More Coming

Temperatures will trend near to above normal in Brazil through next Tuesday. Daytime highs will peak to the 80s and lower 90s with pockets in southern Brazil only warming to the 70s. Low temperatures will be in the 60s and 70s with portions of southern Brazil often cooling to the 50s. Seasonable to seasonably warm weather will persist April 1 – 7.

Harvesting of soybeans, first-season corn, and other crops will continue around periods of rain in coming weeks. Safrinha corn planting will also wind down in the remaining locations. Establishment and early-season development conditions will remain favorable due to the additional rain. The need for timely rain will remain high later in April to support favorable long-term production potentials.

World Weather, Inc. forecasts and comments pertaining to present, past and future weather conditions included in this report constitute the corporation's judgment as of the date of this report and are subject to change without notice. Comments regarding damage or the impact of weather on agricultural and energy as well as comments made regarding the impact of weather on the commodity and financial markets are the explicit opinions of World Weather, Inc. World Weather, Inc. can not be held responsible for decisions made by users of the Corporation's information in any business, trade or investment decision.

©2026 World Weather, Inc. Any unauthorized redistribution, duplication or disclosure is prohibited by law and will result in prosecution.