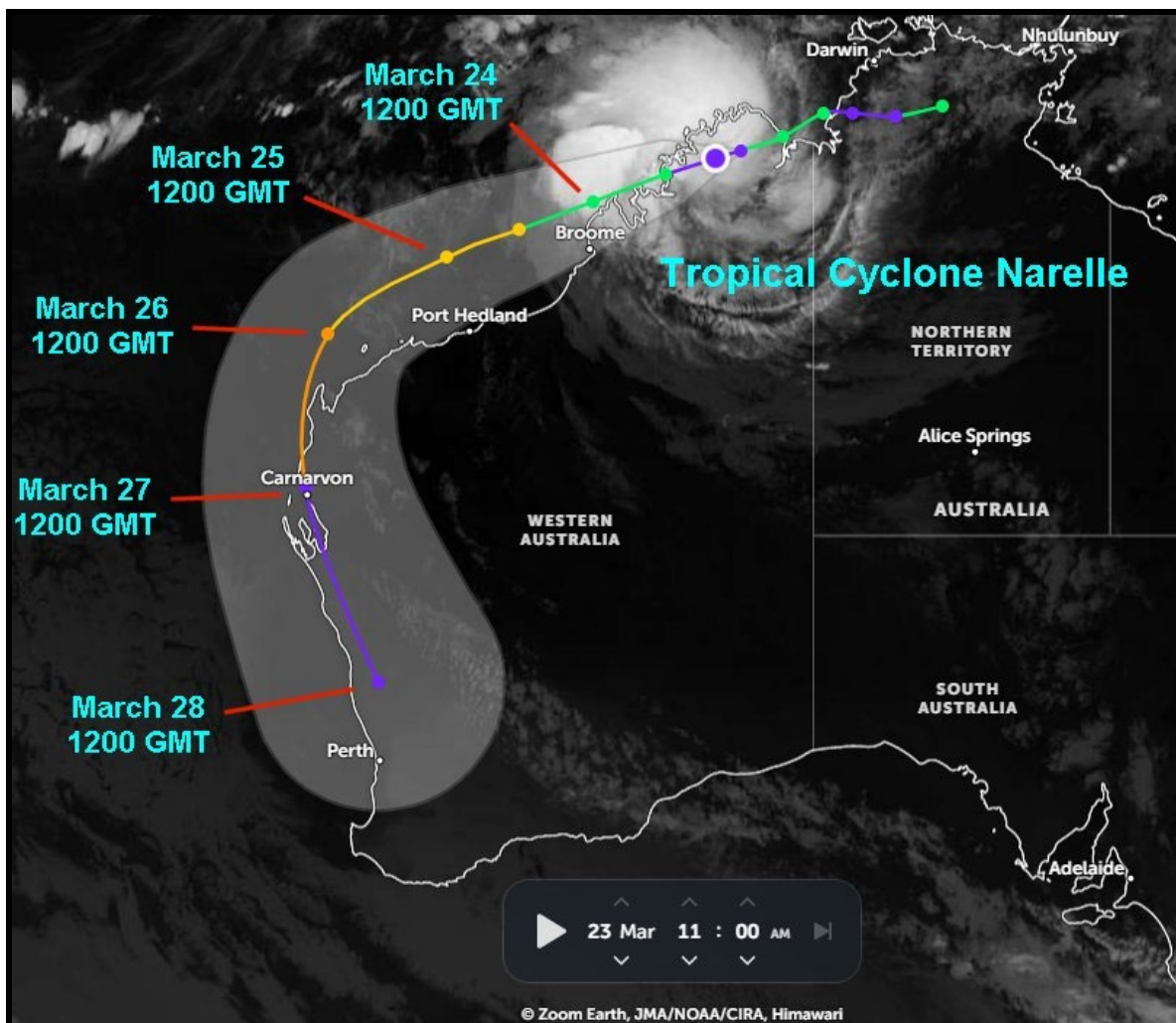


Tropical Cyclone Narelle To Impact Western Australia

By Andrew Owen

Kansas City, March 23 (World Weather Inc.) – Tropical Cyclone Narelle advanced into the northeast corner of Western Australia this morning. The disturbance will travel along the northern Western Australia coastline through Tuesday before moving just offshore toward the middle of the week. *Ocean travel will likely be diverted around the disturbance and strong storm surge may promote minor damage in Port Hedland.* Tropical Cyclone Narelle will then potentially shift southeasterly into western sections of Western Australia Friday and this weekend possibly impacting the Learmonth, Shark Gulf, Geraldton and Perth ports. *The rain may improve the moisture profile for some of the winter grain and oilseed areas, but may not be enough to completely fix the moisture deficits.*

At 1500 GMT, Tropical Cyclone Narelle was located near 15.3 north, 126.2 east, or approximately 328 miles southwest of Darwin, Australia. Movement was west-southwesterly at 15 mph during the past six hours. Maximum sustained surface wind speeds were at 40 mph, gusting upwards of 52 mph. Tropical storm force wind speeds (39 to 73 mph) were occurring up to 150 miles away from the center of the disturbance.



Tropical Cyclone Narelle To Impact Western Australia

Tropical Cyclone Narelle will continue tracking west-southwesterly along the northern Western Australia coastline today and Tuesday before tracking into the Indian Ocean just north of the region Wednesday and Thursday. Heavy rain associated with the disturbance will evolve across northern Western Australia during this time. Moisture totals by Friday morning will range from 1.00 to 4.00 inches with local amounts of 8.00 inches or more in a few pockets along the coast. Tropical storm force wind speeds will likely occur portions of northeastern Western Australia today and Tuesday before the disturbance shifts into the Indian Ocean.

Port Hedlund, Australia will likely miss out on some of the most significant rain associated with Tropical Cyclone Narelle. Localized flooding will still be possible. Strong storm surge will be a concern as the disturbance passes just to the north toward the middle of the week. Ocean travel will likely be disrupted as Tropical Cyclone Narelle advances near and over Western Australia during the next several days. Port damage should be relatively minimal unless the disturbance takes a sharp turn to the south in the next few days.

Tropical Cyclone Narelle will likely shift to the southeast and into western and southwestern Western Australia Friday and this weekend. Narelle may enter Western Australia with the intensity of a hurricane before gradually weakening when tracking farther inland. Several winter grain and oilseed areas will receive rain if Narelle enters the region, though some of the main production areas may only receive light amounts of precipitation. Timely rain will still be needed later in April to support better early-season planting of wheat, barley and canola. Rain and strong wind speeds may otherwise promote minor structural damage in portions of western and southwestern Western Australia. **Port activity may also be disrupted in the Learmonth, Shark Gulf, Geraldton and Perth areas if the disturbance tracks as advertised later this weekend.**

World Weather, Inc. forecasts and comments pertaining to present, past and future weather conditions included in this report constitute the corporation's judgment as of the date of this report and are subject to change without notice. Comments regarding damage or the impact of weather on agricultural and energy as well as comments made regarding the impact of weather on the commodity and financial markets are the explicit opinions of World Weather, Inc. World Weather, Inc. can not be held responsible for decisions made by users of the Corporation's information in any business, trade or investment decision.

©2026 World Weather, Inc. Any unauthorized redistribution, duplication or disclosure is prohibited by law and will result in prosecution.