

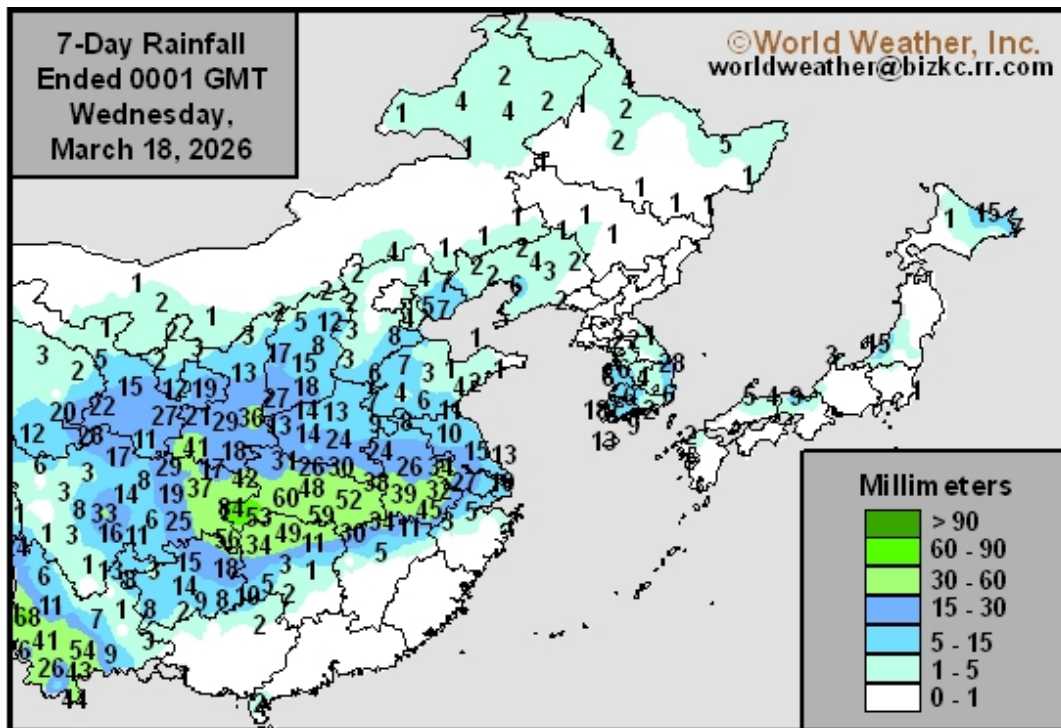
# China's Yangtze River Basin Wet; Southern China Drying Down

By Andrew Owen

Kansas City, March 18 (World Weather Inc.) – Rain was often scattered across China's Yangtze River Basin in recent days. Waves of rain are slated for the region through at least the middle of next week, which will gradually bolster soil moisture across the main winter rapeseed areas. Crop conditions will be generally favorable despite some wet weather. In the meantime, far southern China will generally remain drier than usual through at least the middle of next week. Net drying is slated for most locations raising the need for more significant rain late this month into early April to improve early-season planting prospects. Winter wheat prospects in the North China Plain are also favorable due to timely precipitation in recent weeks.

---

Precipitation varied significantly across China during the past week. Hubei, Sichuan, northern Henan, southern Anhui, southern Shaanxi, and portions of Yunnan received 0.43 to 2.00 inches of moisture with local amounts up to 3.31 inches in Hubei for the seven-day period ending this morning. Henan, Shanxi, Jiangsu, northern sections of Anhui and Shaanxi, northern fringes of Jiangxi, and much of Guizhou received 0.32 to 1.06 inches of moisture. Shandong and portions of Hebei, Liaoning, Inner Mongolia, Heilongjiang, and central Hunan received trace amounts to 0.32 inch of moisture. Little to no precipitation was noted elsewhere.

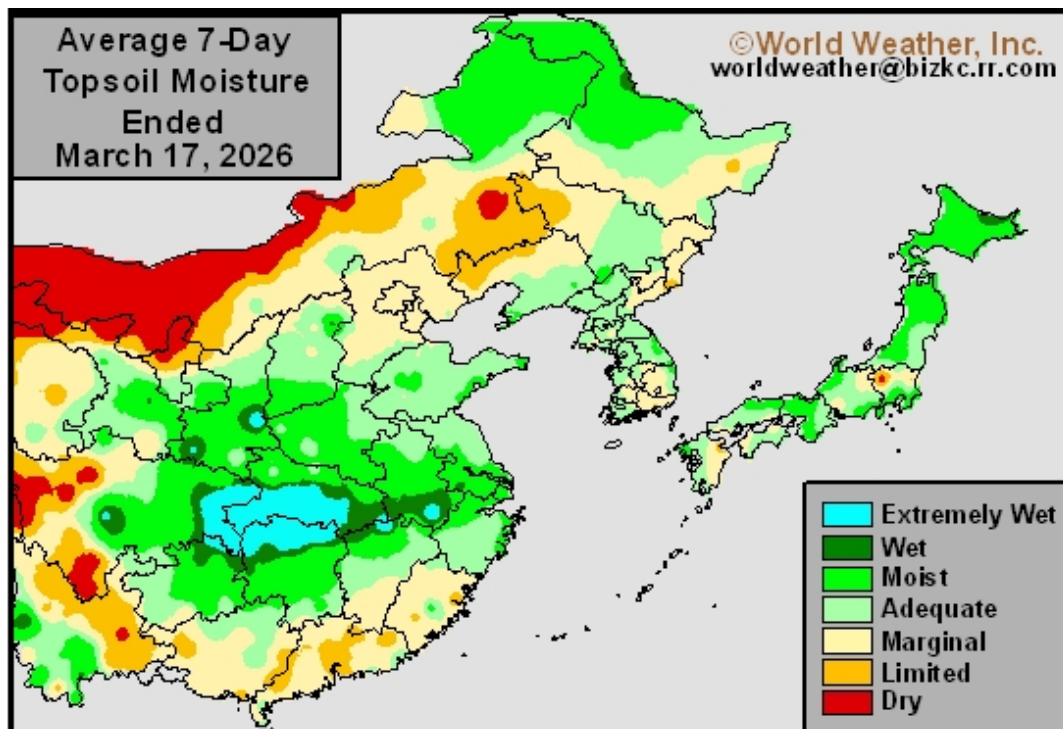


Soil moisture is marginally adequate to short in portions of Guangdong, Fujian, southern Guangxi, central Inner Mongolia, and neighboring areas. Other locations (including rapeseed areas) have adequate to excessive moisture.

## China's Yangtze River Basin Wet; Southern China Drying Down

Southern Guangxi and a few locations in Yunnan are abnormally dry or in a moderate to severe drought as of this morning due to the lack of rain and periods of warmer than usual weather in recent weeks. Pockets in Fujian, Zhejiang, Shanxi, and neighboring areas are also abnormally dry. Other locations in China were drought-free.

Recent rainfall and warm daytime temperatures supported relatively favorable conditions for winter rapeseed development in the Yangtze River Basin. The region received timely precipitation last autumn and over the winter and crop prospects are relatively favorable. Many areas in the North China Plain warmed enough to bring winter wheat out of dormancy in recent days as well. Wheat prospects are favorable due to timely precipitation over the winter.



Early-season rice, corn, and other crop planting begins late in March or April for southern China. Several locations are too dry for ideal planting and establishment, though conditions have improved from late this winter when drought evolved in several locations. The need for timely rain will be high in the coming weeks as normal planting dates approach.

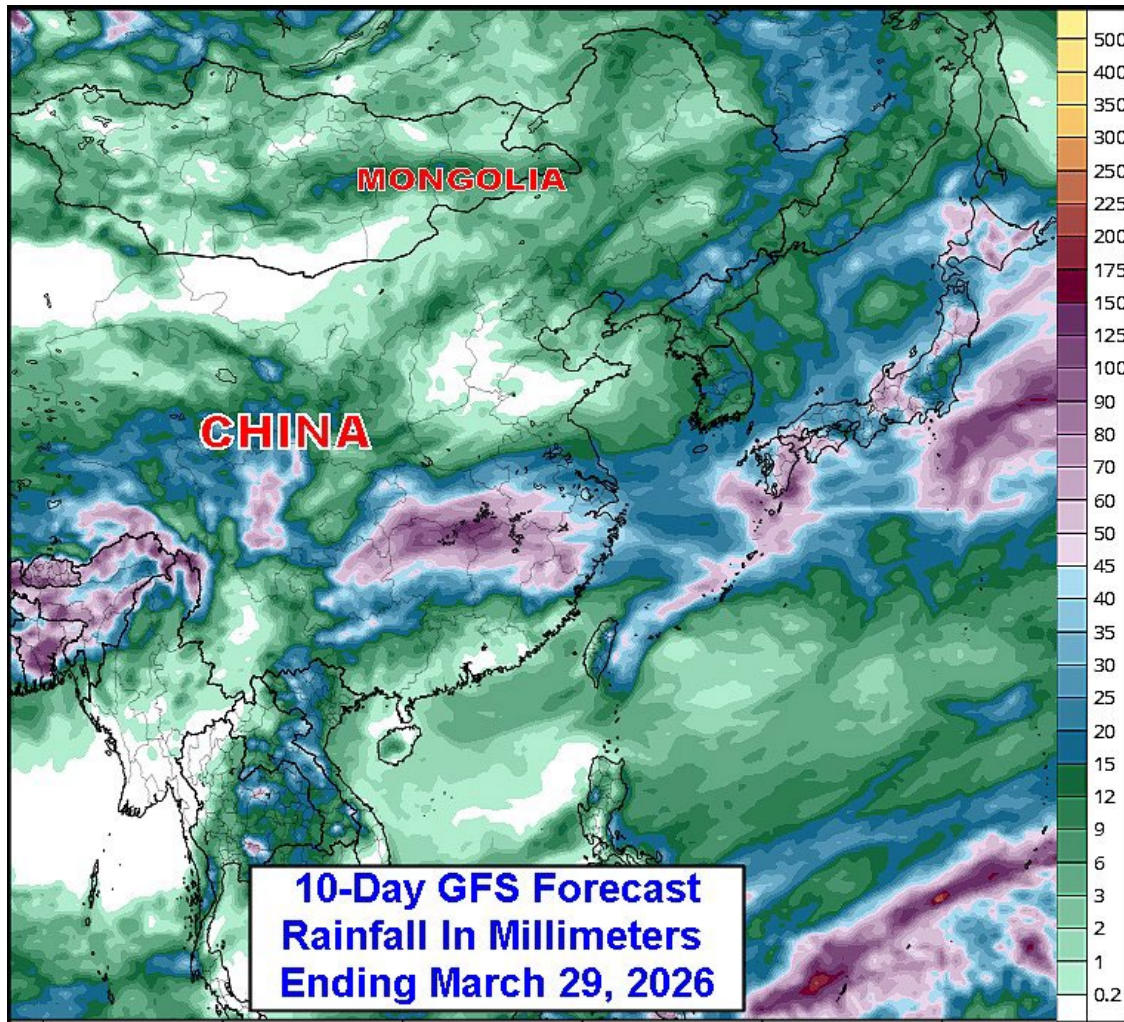
## WEATHER OUTLOOK

Precipitation through the middle of next week will favor the Yangtze River Basin and immediate neighboring areas. Rain will occur on a near daily basis. Moisture totals by next Wednesday morning will range from 1.50 to 5.00 inches in much of the Yangtze River Basin. Fujian, northern Guangxi, southern fringes of Henan and Shaanxi, and neighboring areas will also see a mix of rain and sunshine with totals ranging from 0.25 to 1.50 inches and locally greater amounts. Other areas in southern China, the North China Plain, and

## China's Yangtze River Basin Wet; Southern China Drying Down

central Yellow River Basin will see periods of spotty precipitation as well. These areas will only receive trace amounts to 0.50 inch of rain and locally greater amounts. A disturbance will generate snow for Northeast China today and early Thursday before trending drier for the remainder of the coming week. Moisture totals will range from trace amounts to 0.50 inch. Northern Heilongjiang and northeastern Inner Mongolia will see 2 to 6 inches of snow accumulate while light snow accumulates elsewhere.

Alternating periods of precipitation and sunshine are slated for much of China March 26 – April 1. Precipitation will again be greatest in the Yangtze River Basin and immediate neighboring areas.

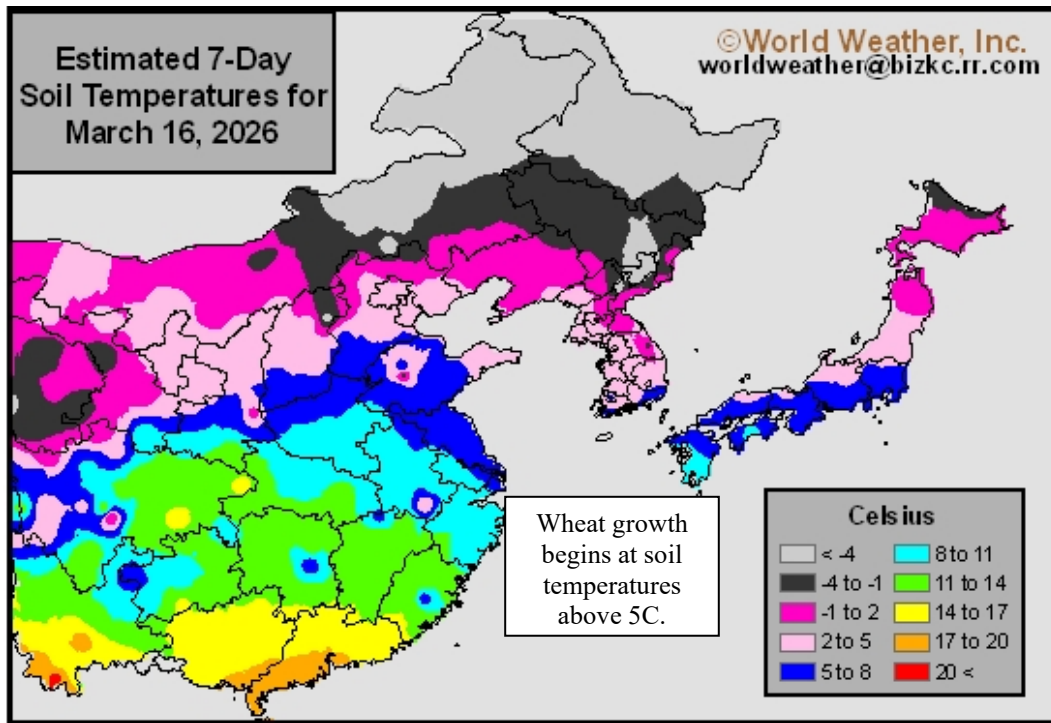


Temperatures will trend near to above normal for much of China through the end of March. Warm daytime temperatures will help lift the remaining winter wheat out of dormancy during the next several days. Early-season planting may also begin in the warmest locations of southern China.

*Winter rapeseed development conditions will remain favorable for much of the Yangtze River Basin in the coming weeks. Winter wheat conditions will also be relatively favorable as more of the crop comes out of dormancy as well. Southern China will*

## China's Yangtze River Basin Wet; Southern China Drying Down

otherwise need to receive more significant rain in early April to promote better early-season planting and establishment.



World Weather, Inc. forecasts and comments pertaining to present, past and future weather conditions included in this report constitute the corporation's judgment as of the date of this report and are subject to change without notice. Comments regarding damage or the impact of weather on agricultural and energy as well as comments made regarding the impact of weather on the commodity and financial markets are the explicit opinions of World Weather, Inc. World Weather, Inc. can not be held responsible for decisions made by users of the Corporation's information in any business, trade or investment decision.

©2026 World Weather, Inc. Any unauthorized redistribution, duplication or disclosure is prohibited by law and will result in prosecution.