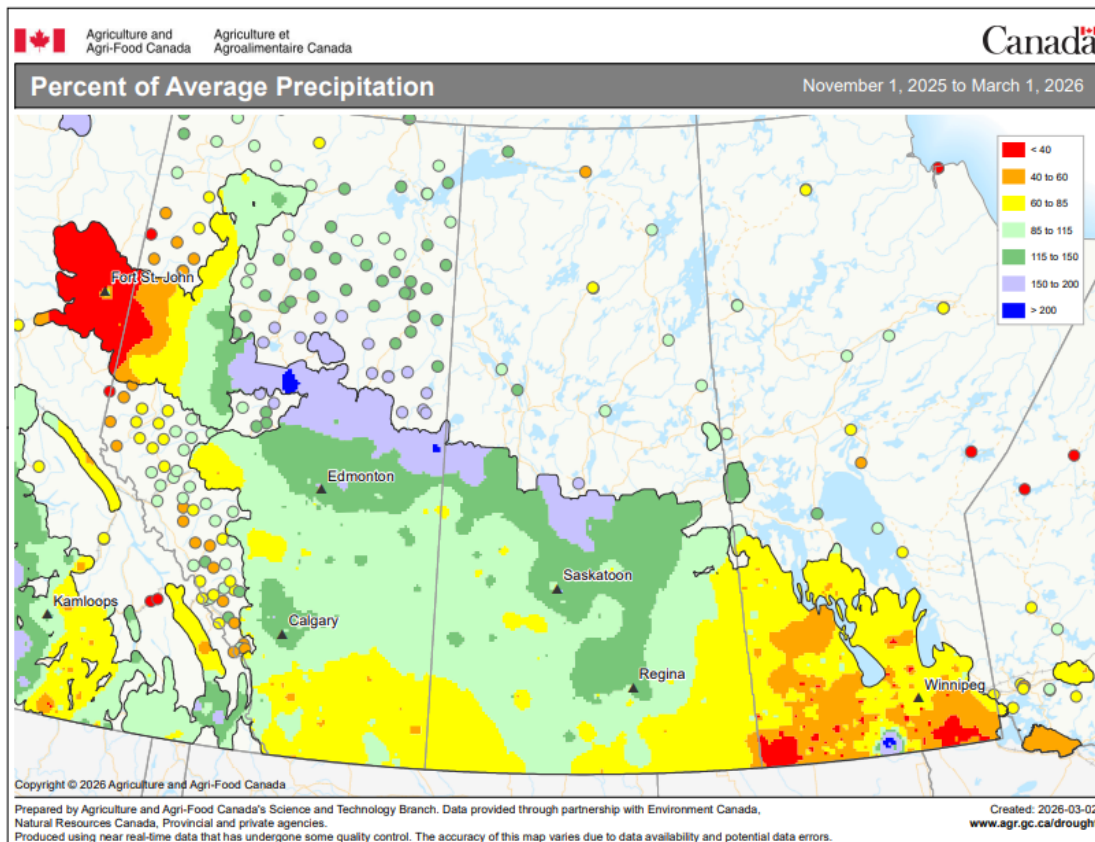


# Canada Prairies Early-Planting Prospects Relatively Favorable

By Andrew Owen

Kansas City, March 11 (World Weather Inc.) – [Winter precipitation across Canada's Prairies has not been ideal with below normal amounts in southern Manitoba and in the Peace River Region. Soil moisture and snowpack in the southwestern Prairies is terrible and there is much concern about spring planting moisture in the region, although some periodic light precipitation is forthcoming to that region.](#) Northeastern Alberta through northern Saskatchewan have the deepest snow cover with some areas reporting more than two feet on the ground. Southern Manitoba has the second greatest snow depth while many areas in the southwest are either snow free or nearly that way. [Timely precipitation will be needed this spring to induce the best planting conditions; although many areas in the north, far west \(near the Alberta mountains\) and in southern Manitoba will have moisture from melting snow to get started with.](#)

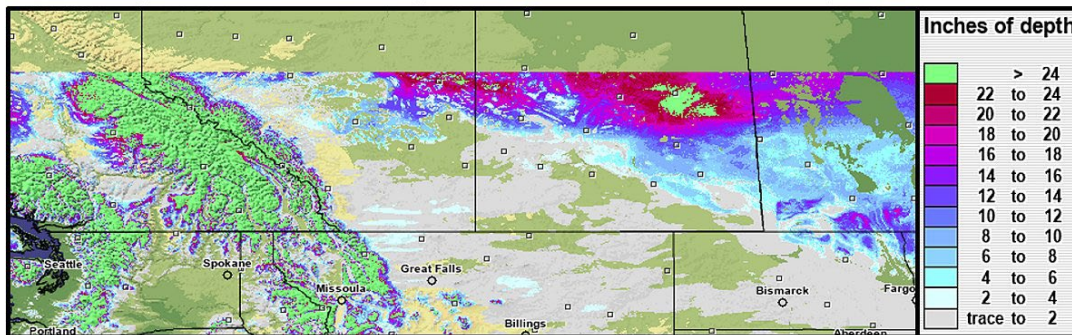
Precipitation varied across the Prairies during the past several months. From November 1, 2025 – March 1, 2026, Manitoba, extreme northwestern Alberta, and northeastern British Columbia only received 40% to 85% of normal precipitation with drier pockets. Several areas in southern Alberta and southern and eastern Saskatchewan also received near to below normal precipitation. The remaining areas in Alberta and Saskatchewan received near or above normal precipitation with pockets in northern Alberta and northern Saskatchewan receiving 150% to 200% of normal precipitation.



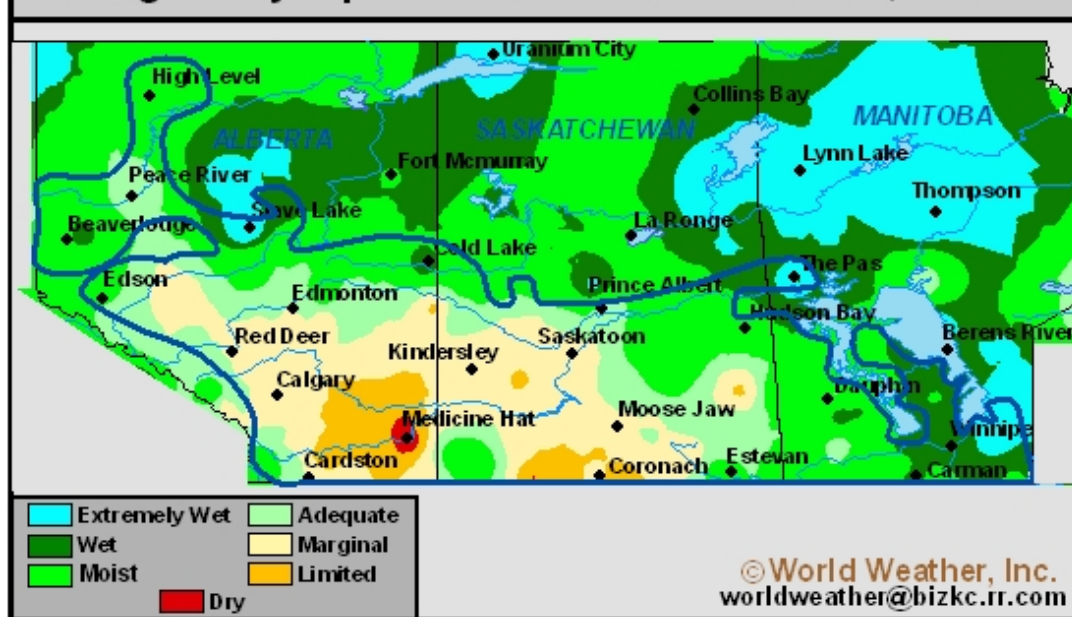
## Canada Prairies Early-Planting Prospects Relatively Favorable

Manitoba and many areas near and north of the Highway 16 corridor in Saskatchewan and Alberta into northeastern British Columbia still had significant snow cover as of this morning. Some locations had more than a foot of snow on the ground with a part of northeastern Saskatchewan having more than two feet of it. Other locations were either snow-free or only had light amounts of snow on the ground. Soil moisture is still rated poor in southern Alberta and portions of southwestern Saskatchewan. Other areas generally have adequate amounts of moisture in the soil.

Computer Modeled Snow Depth Across The Prairies On March 11, 2026



Average 7-Day Topsoil Moisture Ended March 10, 2026

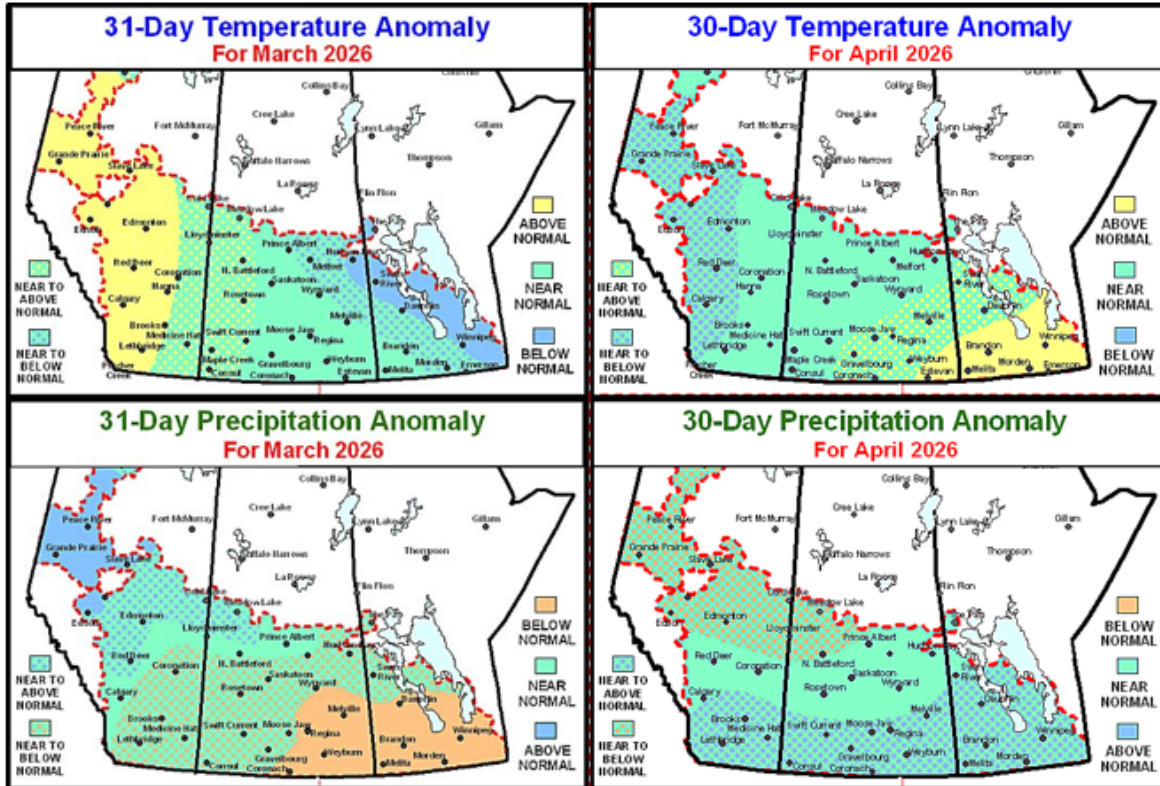


At the end of January, several production areas in the Prairies were abnormally dry with a few areas in southern, central, and northwestern Alberta and northeastern British Columbia experiencing moderate to extreme drought. Although the Prairies generally experienced warmer than normal conditions in February, the moisture profile has not likely changed much in recent weeks.

### WEATHER OUTLOOK

# Canada Prairies Early-Planting Prospects Relatively Favorable

Despite the potential for abnormally dry conditions at the start of the planting season, a large section of the Prairies will have some moisture either from melting snow or leftover from last autumn to support relatively good establishment conditions. There will likely be pockets that are too dry for ideal planting and establishment. However, the start of the planting season is several weeks out. There will be ample time for precipitation to improve planting and establishment in the driest fields.



Precipitation will vary across the Prairies through the middle of next week as a series of disturbances track near or into the region. The most widespread precipitation will occur through Saturday as the first disturbances track over the region. Precipitation will favor portions of western and southern Alberta into southern sections of Saskatchewan and Manitoba while light snow falls elsewhere. After a brief period of drier weather Sunday, another disturbance will likely bring rain and snow to several locations Monday and Tuesday.

Moisture totals by next Wednesday morning will range from 0.25 to 1.00 inch and locally greater amounts from western and southern Alberta and much of Peace River country into southern sections of Saskatchewan and Manitoba. These areas will see 3 to 8 inches of snow accumulate with locally greater amounts. Other production areas will receive trace amounts to 0.40 inch of moisture. Snowfall will range from a dusting to 3 inches. The active weather pattern will likely prevail for much of the Prairies March 19 – 25.

The Prairies will be colder than usual through the end of the weekend before gradually warming near to above normal at the beginning and middle of next week. The active upper-air pattern March 19 – 25 will again promote alternating periods of colder and warmer than normal weather.

## **Canada Prairies Early-Planting Prospects Relatively Favorable**

The combination of precipitation and a lack of significant daytime heating will help bolster snowpack across much of the Prairies through the first part of next week. The boost in snow in the driest areas of Alberta and Saskatchewan will eventually improve the moisture profile once warmer weather evolves. Overall, early-season planting prospects will improve or remain relatively good.

---

World Weather, Inc. forecasts and comments pertaining to present, past and future weather conditions included in this report constitute the corporation's judgment as of the date of this report and are subject to change without notice. Comments regarding damage or the impact of weather on agricultural and energy as well as comments made regarding the impact of weather on the commodity and financial markets are the explicit opinions of World Weather, Inc. World Weather, Inc. can not be held responsible for decisions made by users of the Corporation's information in any business, trade or investment decision.

©2026 World Weather, Inc. Any unauthorized redistribution, duplication or disclosure is prohibited by law and will result in prosecution.