

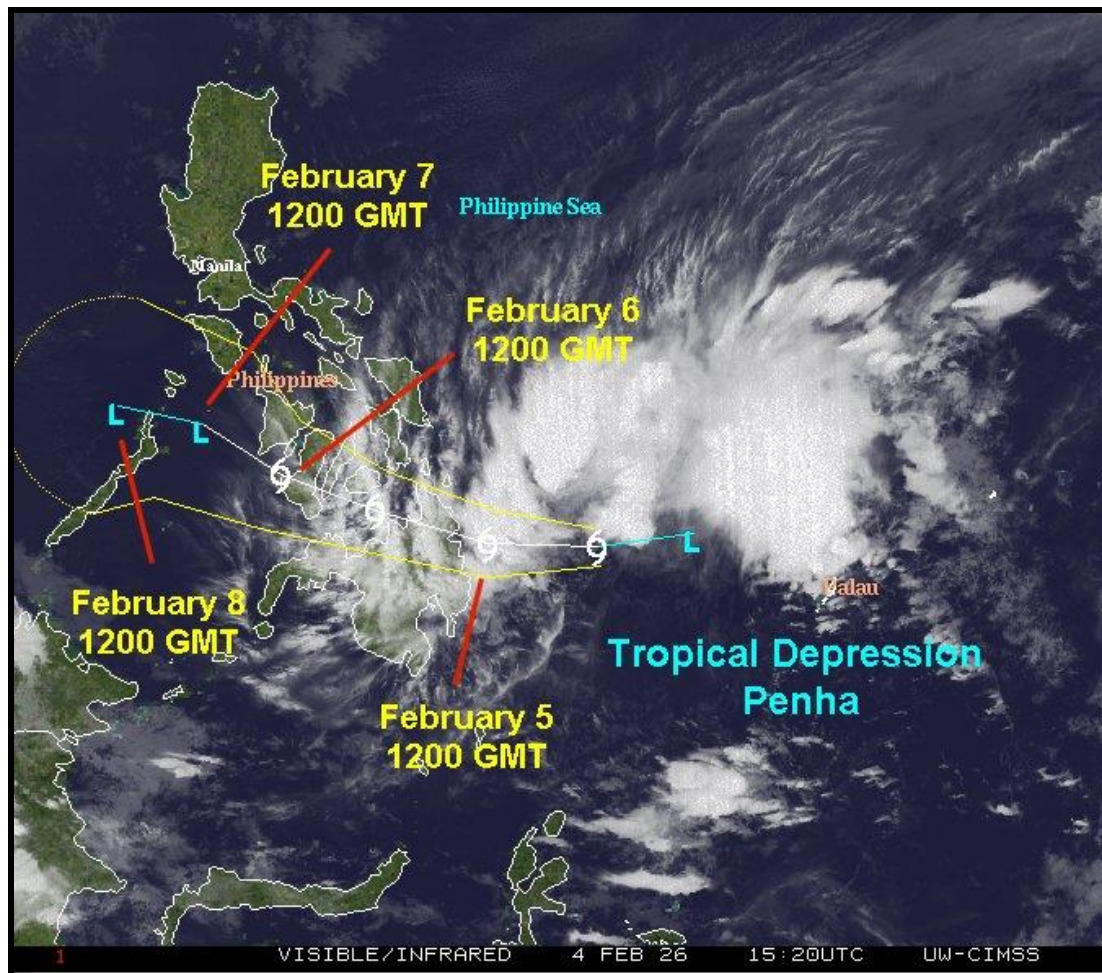
# Tropical Depression Penha Barreling Toward Philippines

By Andrew Owen

Kansas City, February 4 (World Weather Inc.) – Tropical Depression Penha recently evolved over the Pacific Ocean just east of Philippines. The disturbance will track toward Mindanao, Philippines today before slowly tracking west-northwesterly from southern into central Philippines Thursday through Saturday. *Northern Mindanao and portions of the Visayan Islands will see periods of heavy rain that may promote localized flooding. Damage to unharvested rice, corn, and other crops will be possible, though overall production losses will likely be small.* The disturbance will then likely enter the West Philippines Sea later this weekend and early next week.

---

At 1500 GMT, Tropical Depression Penha was located near 8.6 north, 131.0 east, or approximately 818 east-southeast of Manila, Philippines. Movement was 13 mph during the previous six hours. Maximum sustained surface wind speeds were at 35 mph, gusting upwards of 46 mph.



Tropical Depression Penha will slowly track toward Mindanao, Philippines today. Penha will likely intensify into a tropical storm later today before reaching Mindanao

## **Tropical Depression Penha Barreling Toward Philippines**

Thursday. The disturbance will then slowly track west-northwest into western sections of the Visayan Islands and eventually Palawan Friday and Saturday.

Rain associated with Tropical Depression Penha will begin in northern Mindanao overnight tonight and continue through midday Thursday. Precipitation will shift into Negros, Panay, and neighboring areas later Thursday and Friday. Western sections of the Visayan Islands will continue to see elevated rainfall Saturday and early Sunday before Tropical Depression Penha shifts into the West Philippines Sea later Sunday. Moisture totals by Monday morning will range from 3.00 to 7.00 inches with local amounts of 10.00 inches or more from northern Mindanao into western sections of the Visayan Islands. Several of these areas will also see tropical storm force wind speeds Thursday and Friday with wind gusts of 60 mph or higher.

Localized flooding will be a concern from northern Mindanao into Negros, Panay, and neighboring areas in the Visayan Islands as Tropical Depression Penha slowly advances over Philippines. Damage to rice, corn, and other second-season crops will be possible, though overall losses should be minimal. Harvesting and general fieldwork may otherwise be sluggish or come to a standstill for several days in areas that receive the greatest amount of rain.

---

World Weather, Inc. forecasts and comments pertaining to present, past and future weather conditions included in this report constitute the corporation's judgment as of the date of this report and are subject to change without notice. Comments regarding damage or the impact of weather on agricultural and energy as well as comments made regarding the impact of weather on the commodity and financial markets are the explicit opinions of World Weather, Inc. World Weather, Inc. can not be held responsible for decisions made by users of the Corporation's information in any business, trade or investment decision.

©2026 World Weather, Inc. Any unauthorized redistribution, duplication or disclosure is prohibited by law and will result in prosecution.