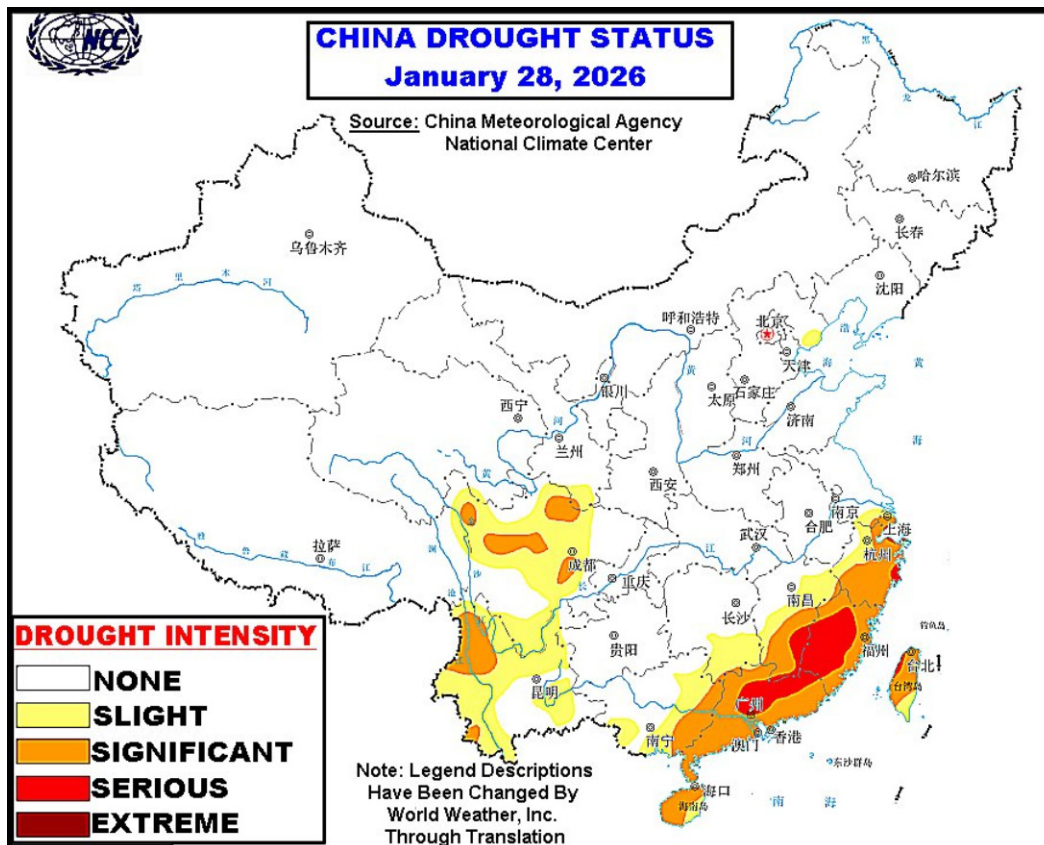


China's Winter Crops In Good Shape; Southeast In Drought

By Andrew Owen

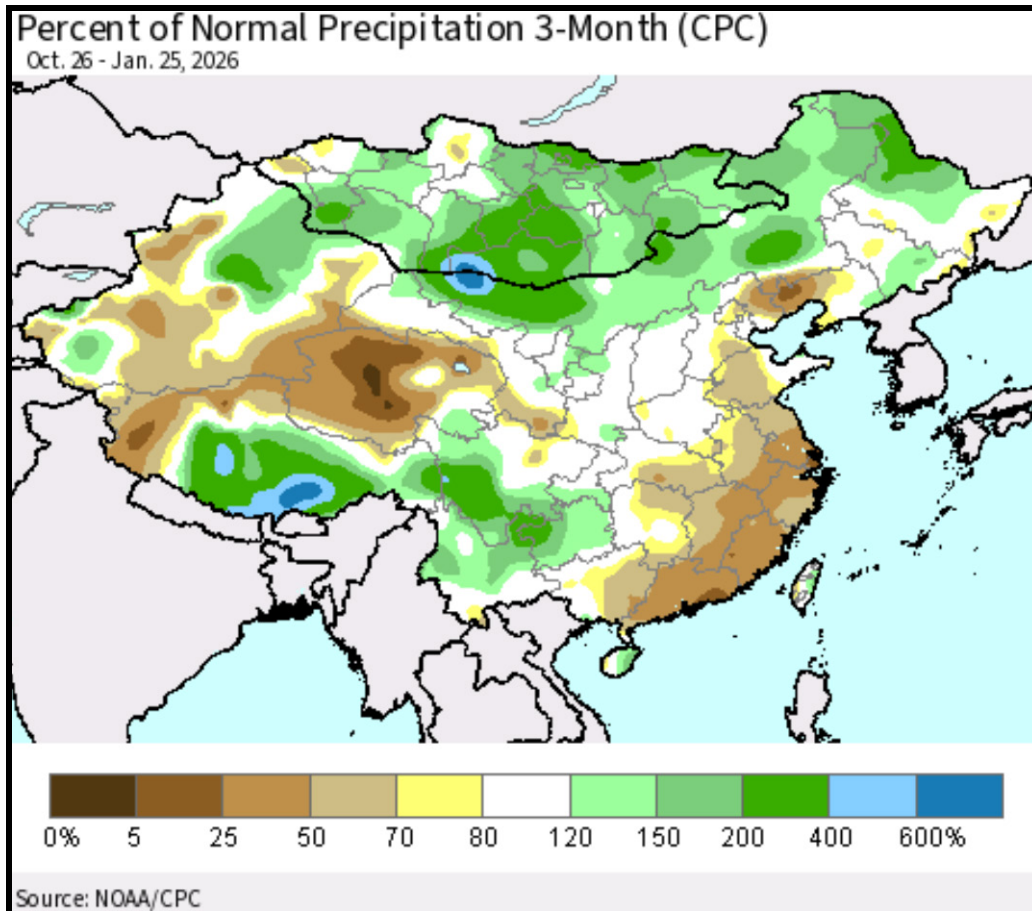
Kansas City, January 28 (World Weather Inc.) – The main winter wheat and rapeseed production areas in China still have adequate amounts of moisture despite several areas receiving little to no precipitation during the past week. Temperatures have been cold enough to limit drying without promoting significant winterkill so far this winter. The Yangtze River Basin and portions of the North China Plain will see a mix of precipitation and sunshine through the middle of next week and crop prospects will remain relatively favorable. *In the meantime, southeastern China trended drier than usual in recent months. The region is in a drought and in need of more significant rain. Precipitation will be limited for at least the next week to ten days. The need for timely rain will be high later in February and March ahead of early season rice planting.*

Significant to serious drought was noted in Guangdong, Fujian, and neighboring areas in Zhejiang, Jiangxi, and Guangxi as of January 28. These areas were generally drier or much drier than usual for the 90-day period ending January 25 with several locations only receiving 25-50% of normal precipitation. Pockets in Sichuan and Yunnan also have slight to significant drought despite precipitation trending near or even slightly above normal during this time. While these areas are not major winter grain or oilseed areas, there is a significant need for rain. Early-season planting begins March or even late February depending on the region. Planting may get off to a sluggish start this season if drought prevails and intensifies.



China's Winter Crops In Good Shape; Southeast In Drought

The remaining production areas in China are generally drought-free. Precipitation for the 90-day period ending January 25 was near to slightly above normal, though portions of Shandong, Hebei, and Liaoning were drier than usual as well. There has been enough precipitation to keep soil moisture at relatively favorable levels in the main winter wheat and rapeseed production areas.



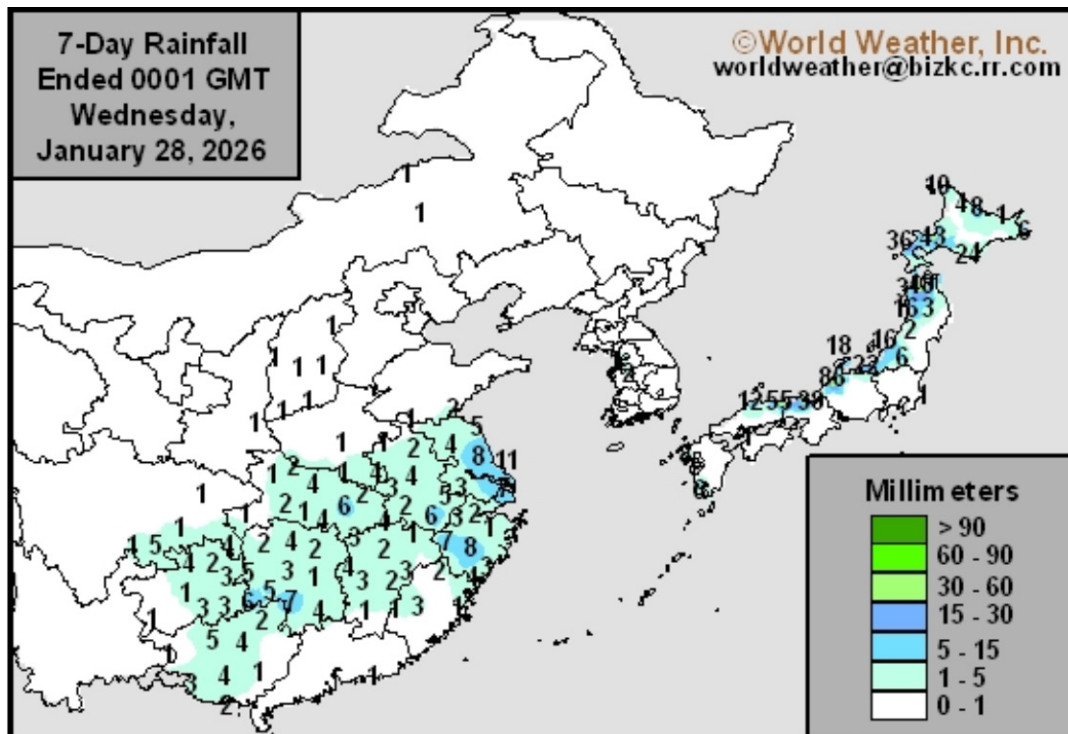
Precipitation will vary across China's main production areas through the middle of next week. A disturbance will bring rain and snow to portions of the Yangtze River Basin, central Yellow River Basin, North China Plain, and southwestern China through Friday. Spotty precipitation will continue for several areas near and south of the Yangtze River this weekend and the first part of next week. Much of the Yangtze River Basin, Guizhou, and portions of northern Guangxi, northern Yunnan, and southern Shaanxi will receive 0.50 to 2.00 inches of moisture with locally greater amounts by next Wednesday morning. Other locations in southern China, the central Yellow River Basin, and portions of Henan will receive trace amounts to 0.50 inch of moisture. Several areas near and north of the Yangtze River will see a dusting to 3 inches of snow accumulate with locally greater amounts as well. Northern China will have a few opportunities for spotty snow through the middle of next week, though snowpack will remain unchanged for most locations.

China's Winter Crops In Good Shape; Southeast In Drought

Areas near and south of the Yangtze River will again see a mix of precipitation and sunshine February 5-11. Areas farther north will generally trend drier than usual, though brief periods of light precipitation cannot be ruled out.

Waves of precipitation in the Yangtze River Basin in the coming weeks will help maintain a good outlook for winter rapeseed. Winter wheat prospects in the North China Plain will remain relatively good as well despite the lack of significant precipitation. Soil moisture will be adequate in the main wheat areas.

In the meantime, periods of rain may improve drought in Zhejiang and immediate neighboring locations in the coming weeks. Early-season planting prospects may improve marginally, though much more rain will be needed. Other locations in southeastern China will remain under a drought in the coming weeks. The concern for delayed early-season planting will increase barring a significant change to the forecast.



World Weather, Inc. forecasts and comments pertaining to present, past and future weather conditions included in this report constitute the corporation's judgment as of the date of this report and are subject to change without notice. Comments regarding damage or the impact of weather on agricultural and energy as well as comments made regarding the impact of weather on the commodity and financial markets are the explicit opinions of World Weather, Inc. World Weather, Inc. can not be held responsible for decisions made by users of the Corporation's information in any business, trade or investment decision.

©2026 World Weather, Inc. Any unauthorized redistribution, duplication or disclosure is prohibited by law and will result in prosecution.