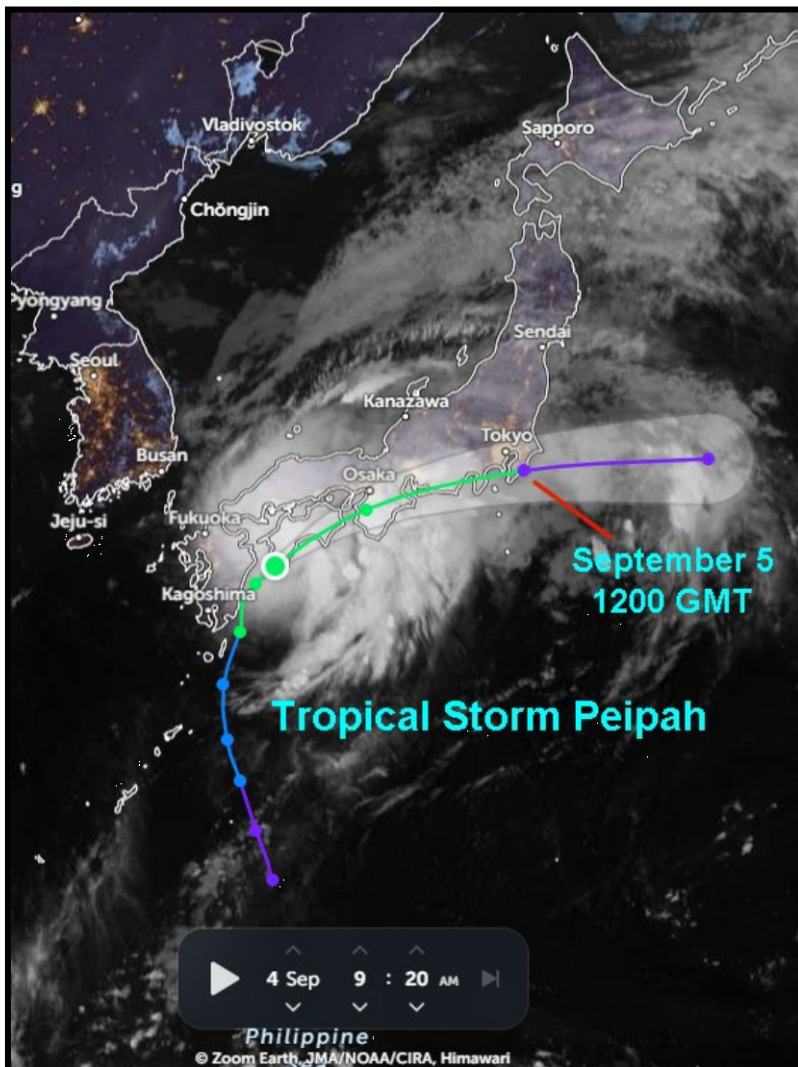


Tropical Storm Peipah Heading Into Southern Japan

By Andrew Owen

Kansas City, April 1 (World Weather Inc.) – [Tropical Storm Peipah recently evolved over the Pacific Ocean just south of Japan. The disturbance will rapidly advance from Kyushu into Shikoku and southern Honshu over the course of the day today and early Friday before shifting back to the ocean later Friday and this weekend. Heavy rain is slated for portions of southern Honshu, Shikoku, and eastern Kyushu which may promote flooding and landslides.](#) Rice, soybean, and other crops are maturing or getting ready for harvest and the rain may lower quality in the wettest locations. Minor damage or losses will also be possible in areas that experience severe flooding.

At 1600 UTC, Tropical Storm Peipah was located over the southwestern most corner



of Shikoku, Japan moving northeasterly at 17 mph and producing maximum sustained wind speeds of 40 mph. Some wind gusts were reaching 52 mph. Tropical storm force wind speeds (39 to 73 mph) were occurring out as far as 104 miles from the center of the disturbance, though mostly to the south.

Tropical Storm Peipah will make its way from Shikoku to far southern Honshu the remainder of today and early Friday. Peipah will gradually weaken after making landfall and will likely be downgraded to a tropical depression later in the day today before re-entering the Pacific Ocean. The disturbance will continue to weaken and lose its tropical characteristics late Friday and this weekend over open water.

Rain will lash areas from eastern Kyushu and much of Shikoku into southwestern and south-central Honshu today and early Friday due to Tropical Storm Peipah. Moisture totals by Saturday morning will range from 1.50 to 5.00 inches with local amounts of 8.00 inches or more in Honshu and Shikoku.

Tropical Storm Peipah Heading Into Southern Japan

Flooding and landslides will be the greatest concern, most notably Shikoku and southern Honshu, today and Friday with regards to Tropical Storm Peipah. No significant wind damage is expected, although there may have been a little damage along the southeast Kyushu and southwestern Shikoku coasts earlier today and late Wednesday. Rice, soybeans, and other crops are maturing and getting ready for harvest in much of the country and the flooding may damage or impact quality for some crops. Overall production is unlikely to be seriously impacted; however, several days of dry weather may be needed before farming activity resumes in the wetter areas.

World Weather, Inc. forecasts and comments pertaining to present, past and future weather conditions included in this report constitute the corporation's judgment as of the date of this report and are subject to change without notice. Comments regarding damage or the impact of weather on agricultural and energy as well as comments made regarding the impact of weather on the commodity and financial markets are the explicit opinions of World Weather, Inc. World Weather, Inc. can not be held responsible for decisions made by users of the Corporation's information in any business, trade or investment decision.

©2025 World Weather, Inc. Any unauthorized redistribution, duplication or disclosure is prohibited by law and will result in prosecution.