

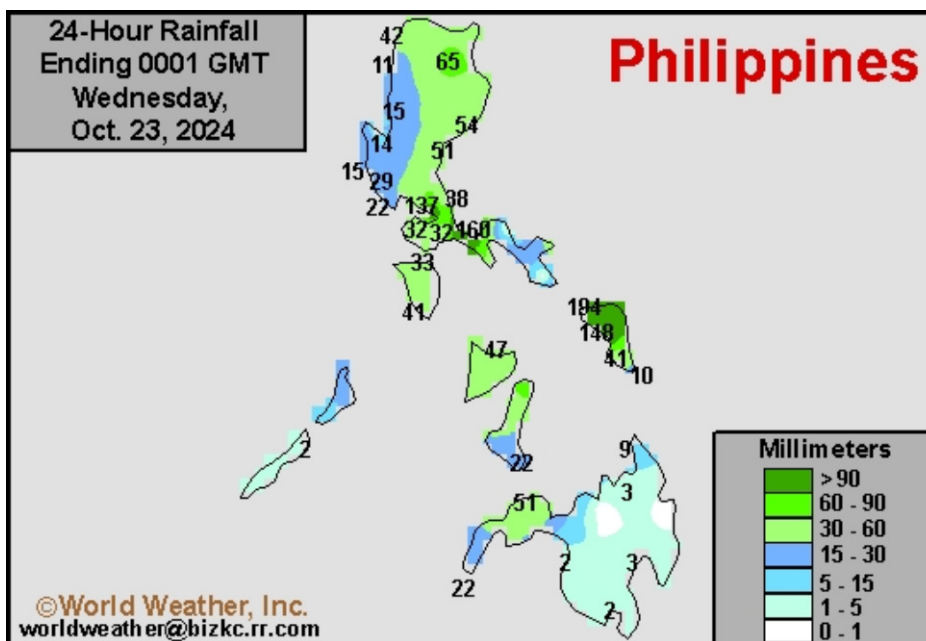
# Tropical Storm Trami Tracking Over Luzon Island Today

By Andrew Owen

Kansas City, October 23 (World Weather Inc.) – [The center of Tropical Storm Trami was nearly mid-way across the northern part of Luzon Island, Philippines at 1900 GMT today. Rain has been falling across northern portions of the nation for nearly 36 hours and some flooding has already resulted. The storm will take another 24 hours to clear the island and much more rainfall is expected through Thursday resulting in additional flooding and some crop and property damage. The storm will eventually track across the South China Sea bringing a risk of flooding and strong wind speeds to Vietnam during the weekend and some similar conditions may occur to Hainan China as it passes to the south late this week.](#)

---

As of 1900 GMT, the center of Tropical Storm Trami was 191 miles north northeast of Manila and at 1500 GMT it was officially located near 17.0 north latitude and 122.5 east longitude. Movement has been northwesterly at 9 mph during the previous six hours. Maximum sustained surface wind speeds were reaching 51 mph with gusts up to 63 mph and speeds greater than 39 mph were occurring out 167 miles from the center of the storm.



Portions of the Philippines already received rain as Tropical Storm Trami advanced closer to the country Tuesday. Portions of Samar Island and southern Luzon Island received 1.50 to 7.64 inches of rain for the 24-hour period ending at 0001 GMT today. Flooding resulted in areas of greatest rainfall.

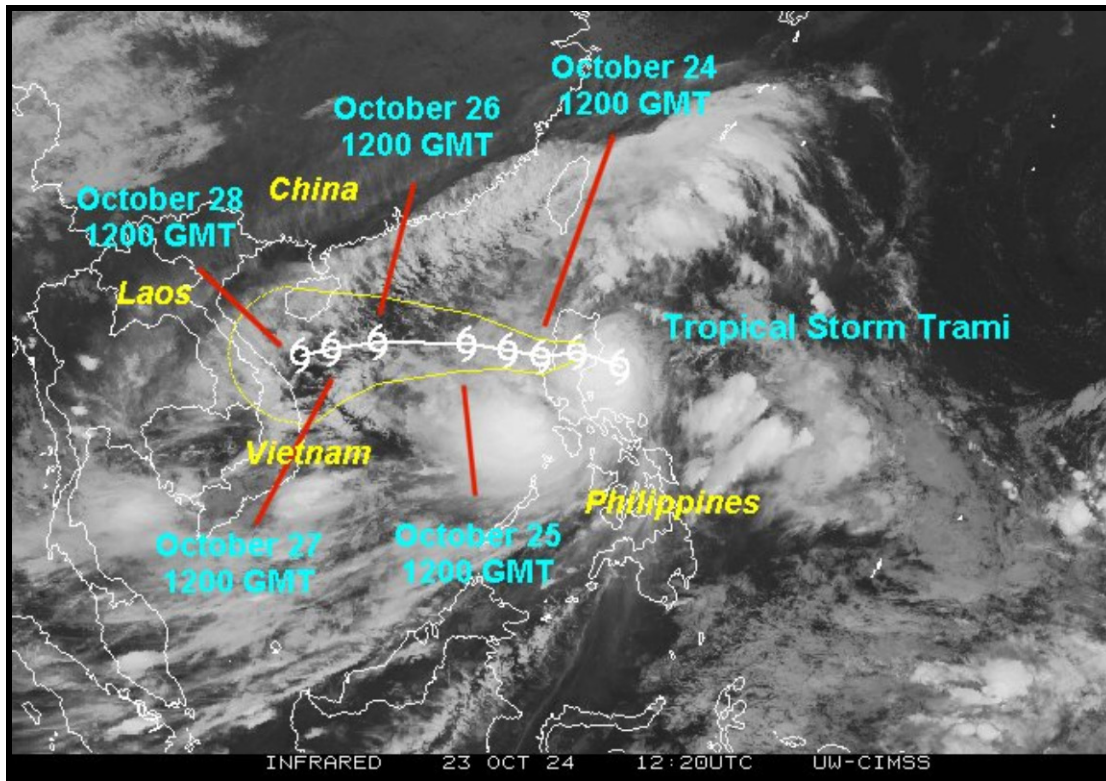
Tropical Storm Trami will advance westerly across the remainder of Luzon Island over the course of the day today and tonight. Rain from the system will impact much of the Philippines with the most significant rain occurring in Luzon and neighboring locations. Additional moisture totals by 1200 GMT Thursday will range from 1.50 to 5.00 inches in much of Luzon (outside the southeast corner) into Mindoro with local amounts of 10.00 inches or more in Mindoro and southwestern Luzon. Lighter rain totals are expected

## Tropical Storm Trami Tracking Over Luzon Island Today

elsewhere in the Philippines, though a few locations in the Visayan Islands could receive 1.00 to 3.00 inches of rain. Rain will linger in many areas of Luzon Thursday as the disturbance shifts farther to the west in the South China Sea. Western parts of Luzon will receive additional heavy rainfall and will experience the greatest flooding as the wind blows into the mountains causing enhanced rainfall due to “upslope” conditions.

*The disturbance will retain its tropical storm status while tracking over Luzon today. The combination of torrential rain and strong wind speeds will promote severe flooding and landslides in portions of Luzon and Mindoro.* The main season corn and rice should be out of the ground. However, second season corn and rice are either planted or in the ground this time of year. Damage is expected and some replanting will be necessary. Overall, production losses should be low. Some minor damage to palm trees, cocoa, and other trees may occur; though, losses will be limited.

Tropical Storm Trami will advance westerly across the South China Sea Thursday and Friday. There is potential for development into a typhoon due to warmer than usual sea surface temperatures, though rapid intensification into a strong typhoon is not expected. Trami will then track near or over Vietnam late Saturday and early Sunday before diminishing rapidly late Sunday and early next week.



*The main concern for Hainan, Vietnam, and southern Laos from Tropical Storm Trami will be the threat of torrential rain.* Outer rain bands will reach Hainan and portions of central Vietnam late Friday before spreading across Hainan, northern and central Vietnam, southern Laos, and neighboring locations over the weekend and early next week. These areas will receive 2.00 to 6.00 inches of rain by next Wednesday morning. A few locations along the central and upper Vietnam coast and in southern Hainan could receive 10.00 inches or more as well, especially in the higher elevated areas. Flooding and

## Tropical Storm Trami Tracking Over Luzon Island Today

landslides will be a concern. *Significant damage to the rice and other coarse grains, oilseeds, coffee, and remaining crops will be possible, although the damage from this storm will not be nearly as severe as that of Typhoon Yagi that impacted far northern Vietnam earlier this year.*

---

World Weather, Inc. forecasts and comments pertaining to present, past and future weather conditions included in this report constitute the corporation's judgment as of the date of this report and are subject to change without notice. Comments regarding damage or the impact of weather on agricultural and energy as well as comments made regarding the impact of weather on the commodity and financial markets are the explicit opinions of World Weather, Inc. World Weather, Inc. can not be held responsible for decisions made by users of the Corporation's information in any business, trade or investment decision.

©2024 World Weather, Inc. Any unauthorized redistribution, duplication or disclosure is prohibited by law and will result in prosecution.