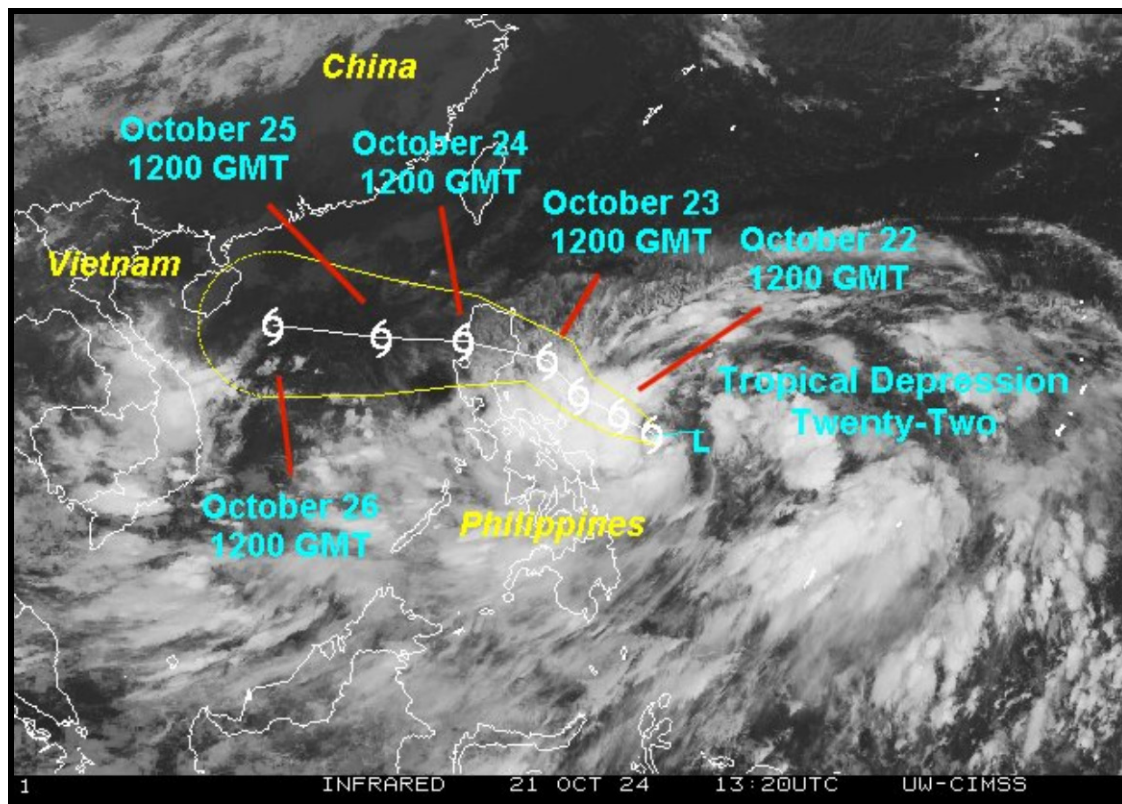


Tropical Depression Twenty-Two Heading For Luzon Island

By Andrew Owen

Kansas City, October 21 (World Weather Inc.) – [Tropical Depression Twenty-Two recently evolved over the western Pacific Ocean. The disturbance will slowly advance toward the Philippines during the next few days and will track over Luzon Island Wednesday. Torrential rain is expected for much of Luzon, along with Samar Island and several locations in the Visayan Islands as the disturbance approaches and eventually tracks across the country. Severe flooding and landslides will be possible.](#) Damage to rice, corn and sugarcane is possible along with damage to personal property and infrastructure; however, the storm is not expected to become a typhoon which should help limit the impact. The storm will enter the South China Sea later this week and may impact portions of Vietnam and Hainan, China over the weekend.

At 2100 GMT, Tropical Depression Twenty-Two was located near 13.3 north latitude and 127.9 east longitude or approximately 429 miles east of Manila, Philippines. Movement was westerly at 8 mph during the previous six hours and maximum surface wind speeds were reaching 35 mph with gusts to 46 mph.



Tropical Depression Twenty-Two will intensify into a tropical storm over the course of the day today while tracking across the western Pacific Ocean. The disturbance will track closer to the Philippines Tuesday before advancing over Luzon Island Wednesday. Outer rain bands from the storm will begin reaching Samar Island and portions of the Visayan

Tropical Depression Twenty-Two Heading For Luzon Island

Islands and Luzon Island Tuesday with more widespread rain occurring Wednesday. Only a few light showers are expected Thursday as the disturbance shifts into the South China Sea.

Luzon Island, Samar Island, and several other areas in the Visayan Islands will receive 5.00 to 10.00 inches of rain by Thursday morning. Pockets in Samar Island and northern Luzon will also receive 10.00 to 20.00 inches of rain. In addition to the torrential rain, Luzon Island will also experience tropical storm force wind speeds Wednesday as the disturbance tracks over the region. Severe flooding and landslides are likely Tuesday and Wednesday. Damage to rice and corn is possible along with sugarcane and other crops, although wind damage should be low since the storm is not expected to reach typhoon intensity. Recently-planted corn and rice may also need to be reseeded.

The disturbance will track westerly across the South China Sea Thursday and Friday. There is potential, the system will intensify into a typhoon during this time before tracking near Hainan, China late Friday. This system could then reach Vietnam over the weekend. Flooding and landslides will be possible for Hainan and central Vietnam depending on the exact track the disturbance takes. However, there is too much time out in the forecast to have high confidence for the exact amount and location of the heaviest rain.

World Weather, Inc. forecasts and comments pertaining to present, past and future weather conditions included in this report constitute the corporation's judgment as of the date of this report and are subject to change without notice. Comments regarding damage or the impact of weather on agricultural and energy as well as comments made regarding the impact of weather on the commodity and financial markets are the explicit opinions of World Weather, Inc. World Weather, Inc. can not be held responsible for decisions made by users of the Corporation's information in any business, trade or investment decision.

©2024 World Weather, Inc. Any unauthorized redistribution, duplication or disclosure is prohibited by law and will result in prosecution.