

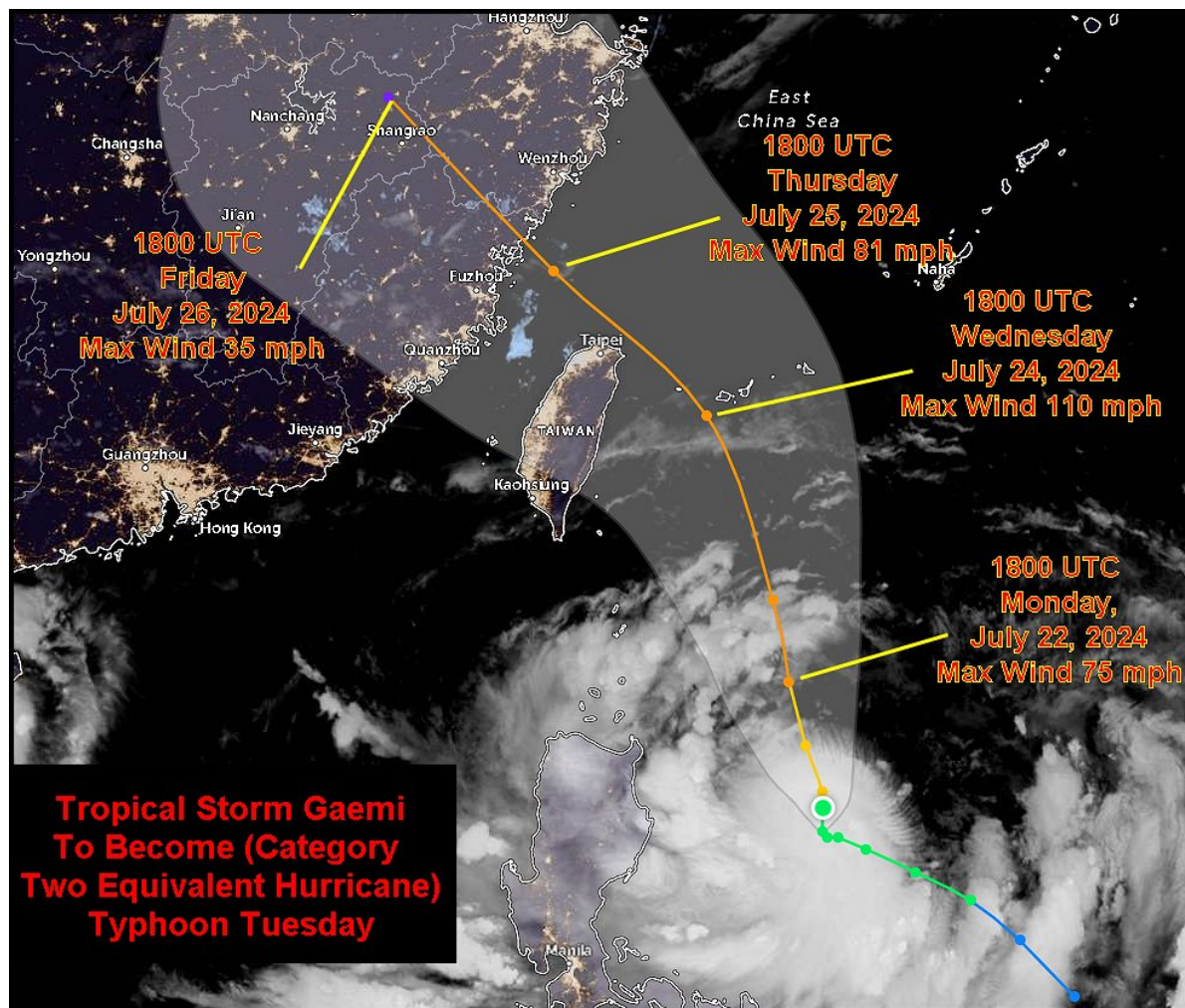
# Tropical Storm Gaemi To Become Typhoon Near Taiwan

By Drew Lerner

Kansas City, July 21 (World Weather Inc.) – [Tropical Storm Gaemi formed east of the Philippines during the weekend and it was expected to quickly become a typhoon tonight or Monday while moving toward the northeast tip of Taiwan. Landfall is not likely in Taiwan, although heavy rain, flooding and strong wind speeds will impact parts of the nation as the storm brushes the northern coast. The storm will reach a Category Two hurricane equivalent storm prior to reaching northeastern Fujian and southern Zhejiang China Thursday.](#) Rice may be most vulnerable to the storm.

---

At 2000 GMT today, the center of the storm was located 207 miles east of northern Luzon Island, Philippines near 17.2 north, 125.7 west moving northerly and producing maximum sustained wind speeds of 65 mph. Tropical storm force wind was occurring out 90 miles from the center of the storm.



Gaemi will continue to move north northwesterly through the night and into the day Monday before turning more northwesterly Tuesday and Wednesday. The storm will pass

## **Tropical Storm Gaemi To Become Typhoon Near Taiwan**

the northeastern tip of Taiwan late Wednesday and early Thursday just prior to landfall in northeastern Fujian and southwestern Zhejiang Thursday producing torrential rain, flooding and damaging wind. Both northern Taiwan and southeastern China will be impacted by the storm resulting in property and agriculture damage. The storm will dissipate over southeastern China late this week with remnants of the storm turning to the north northeast and moving toward northeastern China.

Rainfall of 3.00 to 10.00 inches will occur in northern Taiwan and 5.00 to 15 inches may impact southeastern China. Wind speeds in northern Taiwan will vary from 60 to 100 mph while speeds in Fujian and Zhejiang, China will vary from 40-70 mph except along the coast where some gusts of 80-100 mph will be possible.

**Rice may be most impacted by the storm, although some peanuts, corn, soybeans and citrus crops are produced in southeastern China as well. The storm will be closely monitored for possible change in intensity and direction of movement.**

---

World Weather, Inc. forecasts and comments pertaining to present, past and future weather conditions included in this report constitute the corporation's judgment as of the date of this report and are subject to change without notice. Comments regarding damage or the impact of weather on agricultural and energy as well as comments made regarding the impact of weather on the commodity and financial markets are the explicit opinions of World Weather, Inc. World Weather, Inc. can not be held responsible for decisions made by users of the Corporation's information in any business, trade or investment decision.

©2024 World Weather, Inc. Any unauthorized redistribution, duplication or disclosure is prohibited by law and will result in prosecution.