

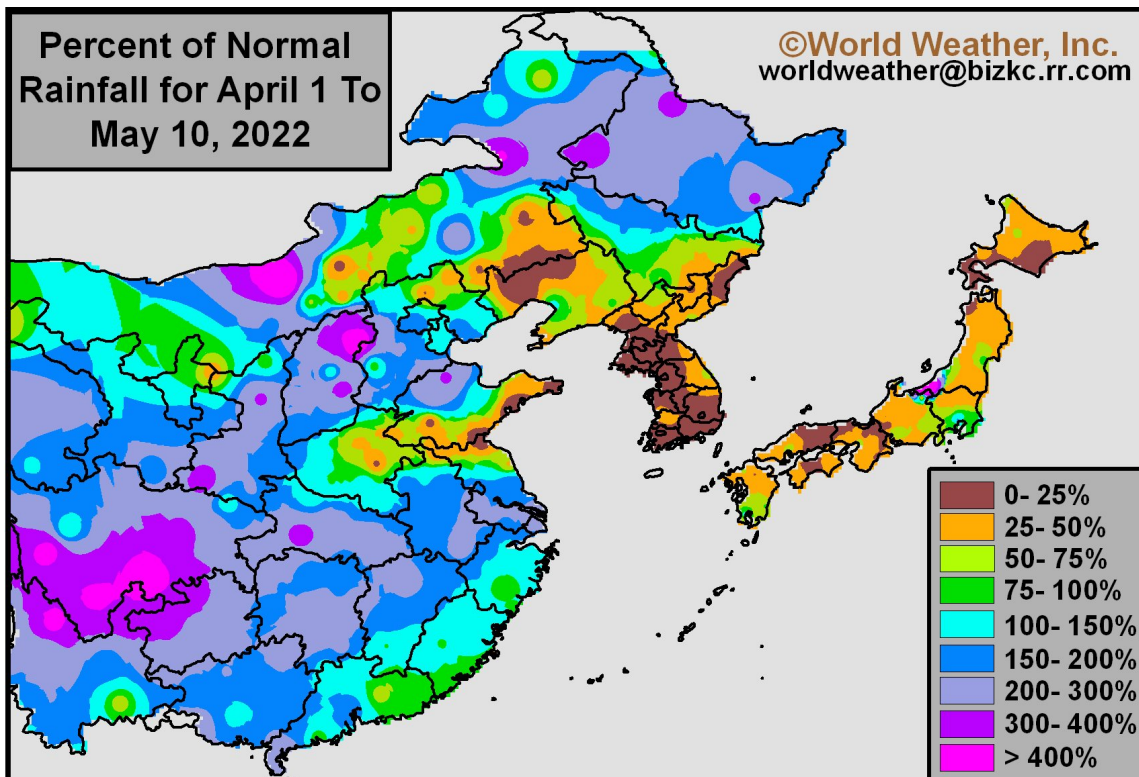
# South Korea Dryness May Threaten Rice Production

By Drew Lerner

Kansas City, May 10 (World Weather Inc.) – [Rainfall across the Korean Peninsula has been lackluster in recent weeks trending well below average at times. Seasonal warming has begun and the low precipitation bias is translating into much lower soil moisture. The need for rain is rising daily and concern is rising for South Korea's rice crop and a few other crops produced in the region. Some of the dryness is expected to expand during the next ten days into a larger part of the Korean Peninsula.](#)

---

Rainfall during the second half of April dropped off significantly in southern portions of the Korean Peninsula and over South Korea in particular. The drier biased conditions have been prevailing through the first one-third of May as well. If dryness is not soon relieved there may be some negative impact on rice and other crop development in the region.

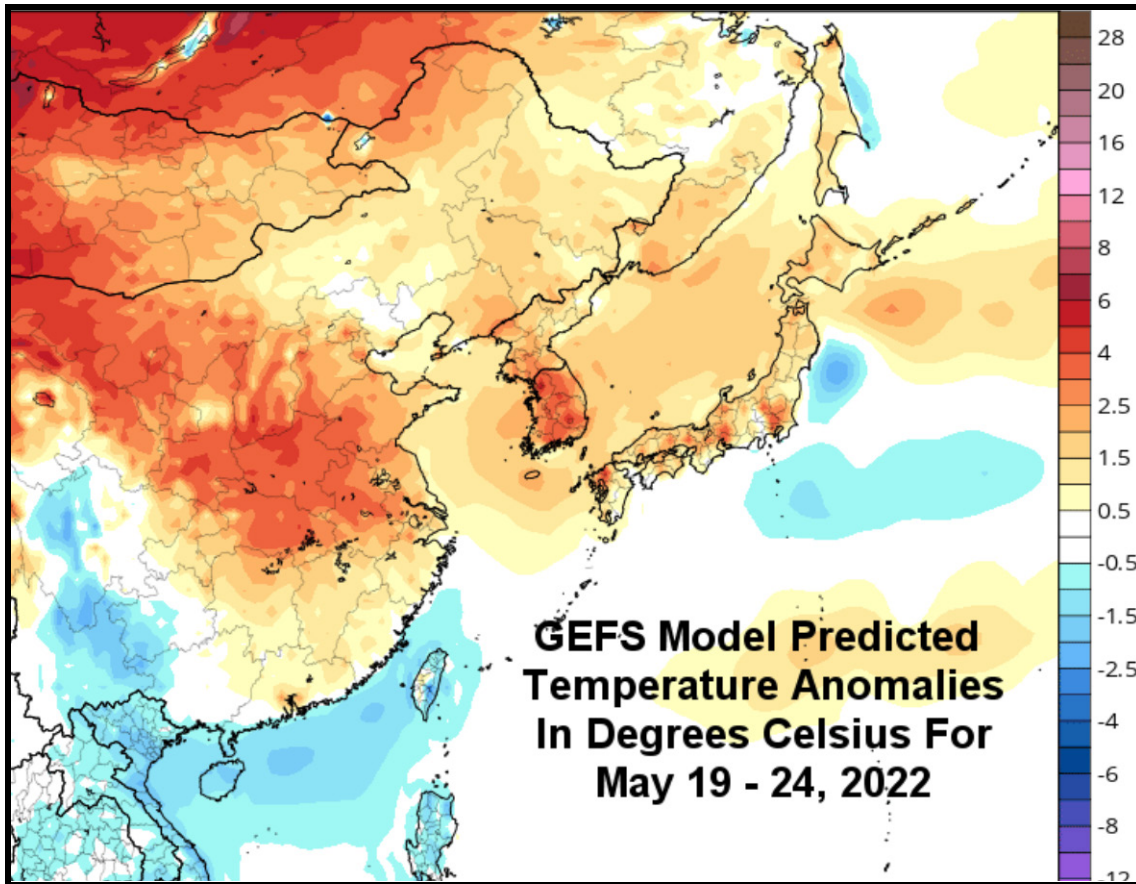


Most of today's computer weather forecast models have suggested the next ten days to two weeks will be drier than usual in South Korea and portions of western and southern North Korea. This dryness is a part of a dry bias that is also impacting east-central China from Shandong and Henanto Anhui and Jiangsu. [The dryness has not festered quite long enough to be a big issue for China or the Korean Peninsula, but by the end of this month the dryness will be of greater concern.](#)

Rice planting in South Korea usually occurs in May and June which makes the moisture profile in the nation of great importance for rain fed production areas. North Korea plants most of its rice in the June and July time period.

## South Korea Dryness May Threaten Rice Production

Nearly all of the medium range computer weather forecast models are perpetuating the dryness into late this month and that will raise interest into the moisture situation as time moves along. In addition to the dryness, temperatures are advertised to rise from a mostly seasonable range this week into a warmer than usual bias next week.



There is plenty of time for weather conditions to change, but the situation will need to be closely monitored. Some of the longer range forecasting tools that World Weather, Inc. uses have been flashing a caution sign for these areas in China and the Korean Peninsula for a possible summer filled with lighter than usual rain intensity and periodic warm biases.

Japan has been a little drier biased of late, too, but it will have a much better chance of seeing greater rainfall later this month.

---

World Weather, Inc. forecasts and comments pertaining to present, past and future weather conditions included in this report constitute the corporation's judgment as of the date of this report and are subject to change without notice. Comments regarding damage or the impact of weather on agricultural and energy as well as comments made regarding the impact of weather on the commodity and financial markets are the explicit opinions of World Weather, Inc. World Weather, Inc. cannot be held responsible for decisions made by users of the Corporation's information in any business, trade or investment decision.

©2022 World Weather, Inc. Any unauthorized redistribution, duplication or disclosure is prohibited by law and will result in prosecution.