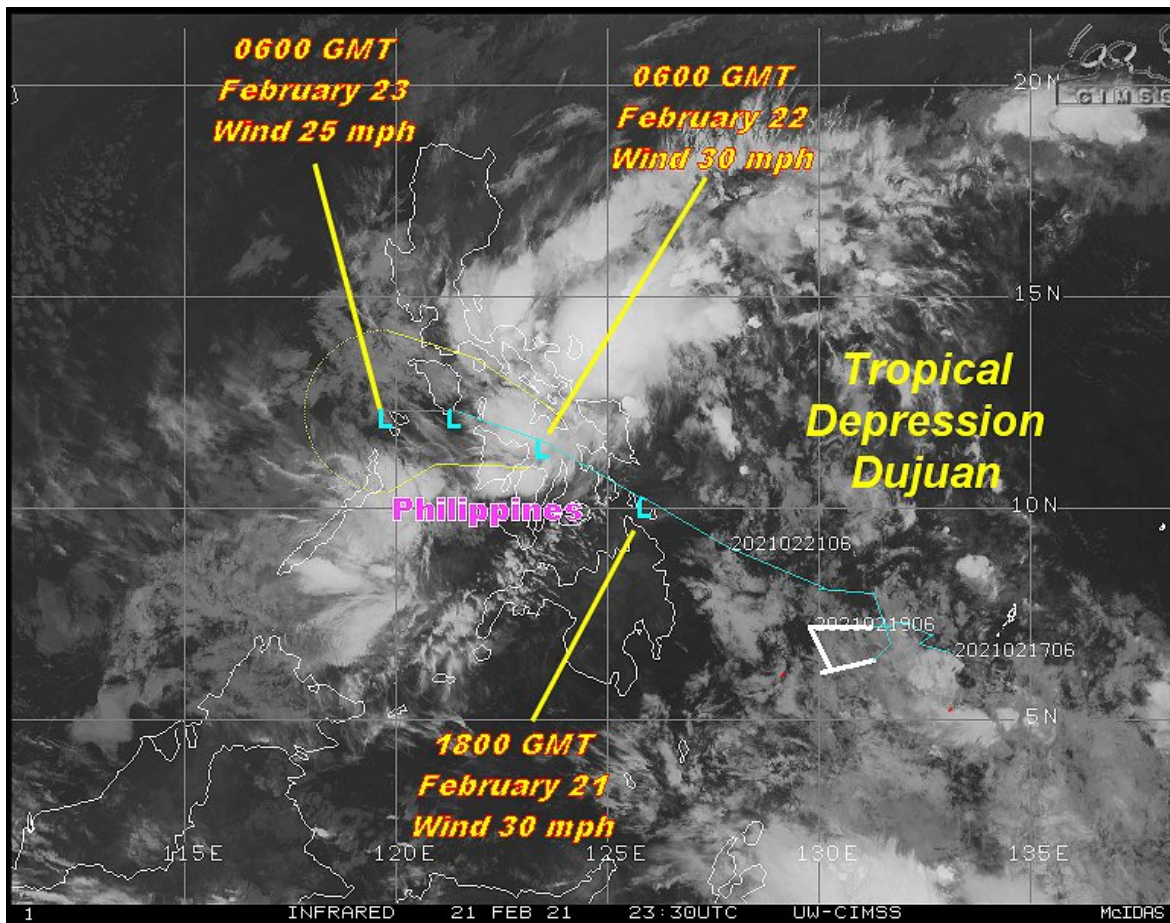


Tropical Depression Dujan Cutting Through Philippines

By Drew Lerner

Kansas City, February 21 (World Weather Inc.) – [Tropical Depression Dujan will move through the Visayan Islands Monday before exiting out into the South China Sea Tuesday. The storm will not regain its tropical storm status that it had before reaching the Philippines early in the weekend. The storm is still expected to produce widespread rain and induce some flooding. Crop damage is not likely to be very great since the storm moves through the heart of the smaller Visayan Islands limiting the amount of crop to be impacted. The system may dissipate before getting completely across the Philippines Monday.](#)

At 2100 GMT Sunday, Tropical Depression Dujan was located 390 miles southeast of Manila moving west northwesterly at 14 mph. Maximum sustained wind speeds were reaching 30 mph.



Satellite and surface weather observations have been suggesting some significant rain fell across a part of the islands Sunday, but the system is quite disorganized with the greatest convection at the time of this reporting well to the northeast of the storm center over open water. The system will like flare its convection again during the day Monday increasing rainfall from the northern Visayan Islands into southern Luzon. Heavy rainfall of

Tropical Depression Djuan Cutting Through Philippines

3.00 to 8.00 inches is still expected with local totals to 10.00 inches in mountainous locations.

Djuan is expected to have a low impact on the Philippines with most crops expected to survive the storm. Some flooding is likely, but it will not be serious in key crop areas and the potential for damage is relatively low. A few pockets of notable flooding are still possible and that might impact a few rice, sugarcane and corn production areas. A few herbs and spices might also be negatively impacted, but sunnier and warmer weather to follow the storm later this week will bring an opportunity for crop improvements relatively quickly.

Property damage is also expected to be light.

World Weather, Inc. forecasts and comments pertaining to present, past and future weather conditions included in this report constitute the corporation's judgment as of the date of this report and are subject to change without notice. Comments regarding damage or the impact of weather on agricultural and energy as well as comments made regarding the impact of weather on the commodity and financial markets are the explicit opinions of World Weather, Inc. World Weather, Inc. cannot be held responsible for decisions made by users of the Corporation's information in any business, trade or investment decision.

©2021 World Weather, Inc. Any unauthorized redistribution, duplication or disclosure is prohibited by law and will result in prosecution.