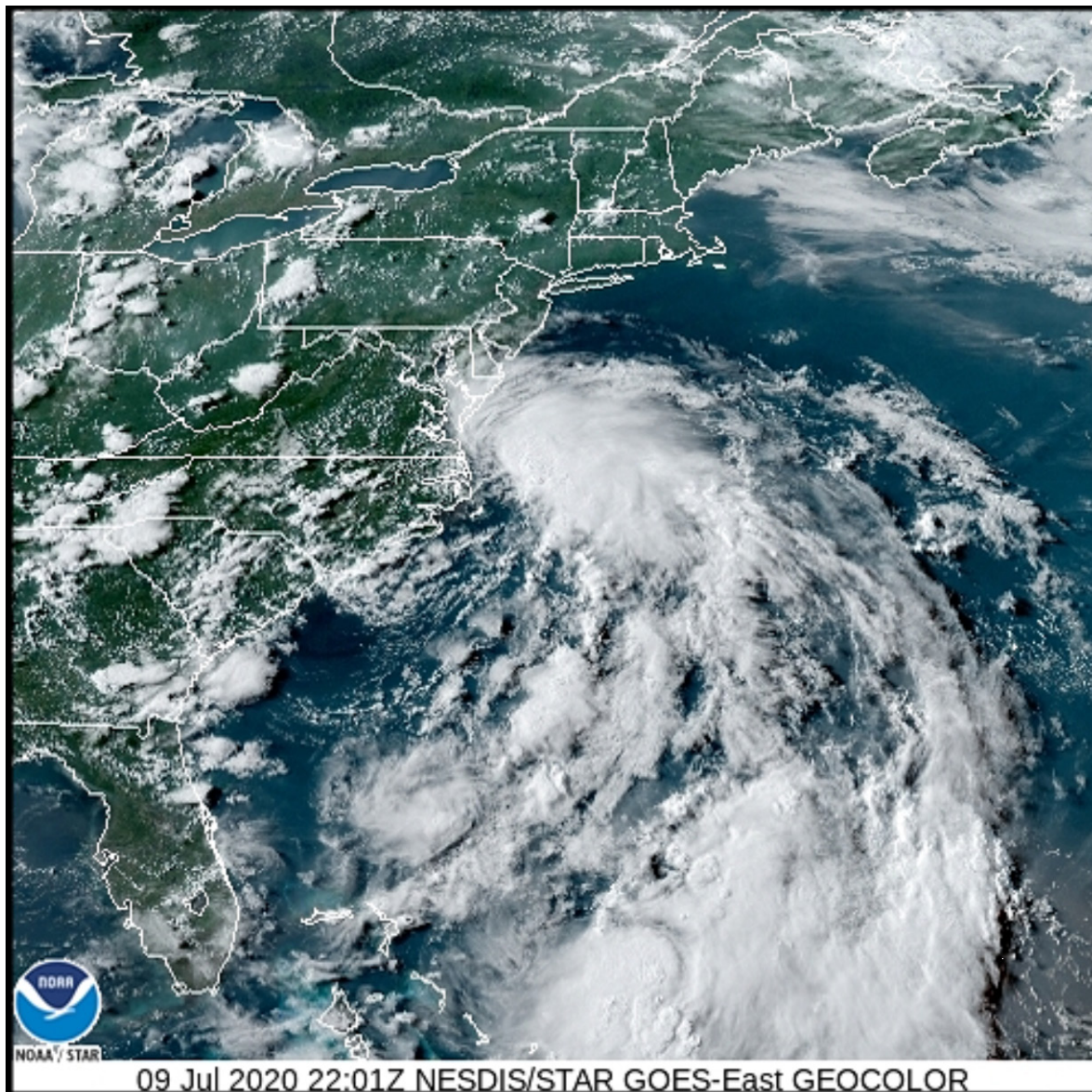


Tropical Storm Fay To Reach New Jersey Friday

By Drew Lerner

Kansas City, July 9 (World Weather Inc.) – Tropical Storm Fay formed this evening off the North Carolina coast and will reach New Jersey Friday and pass through New England to southeastern Canada during the weekend. The storm will not have enough time to become very well organized, but it will spread some significant rain through the northeastern United States and neighboring areas of southeastern Canada Friday through the weekend.

At 1700 EDT today, the center of the storm was located 40 miles east northeast of Cape Hatteras, North Carolina at 35.5 north, 74.9 west. Movement was northerly at 7 mph while producing maximum sustained wind speeds of 45 mph. Tropical storm force wind was occurring out 140 miles from the center of the storm .



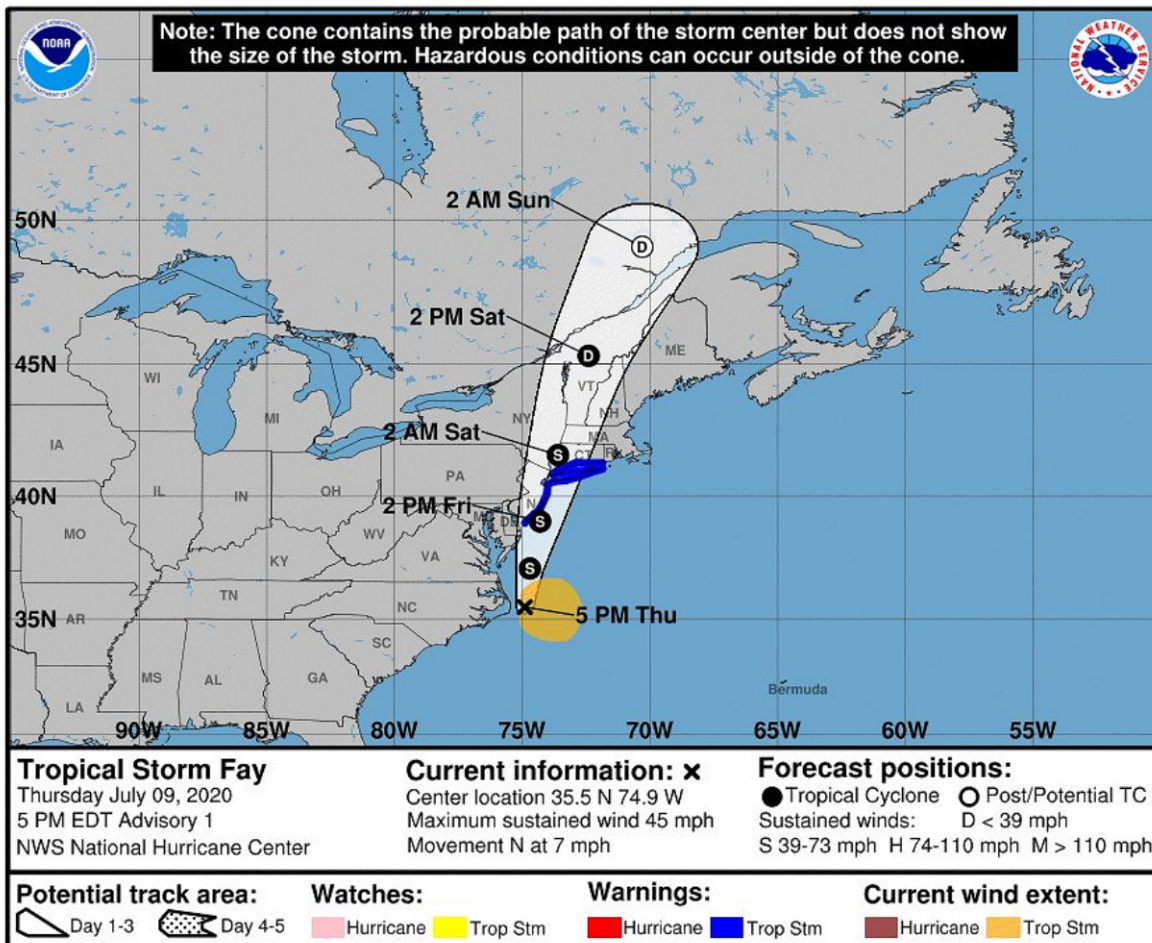
Tropical Storm Fay To Reach New Jersey Friday

The center of Tropical Storm Fay will pass near or over the New Jersey coast Friday afternoon and the center of the storm will more fully move inland over Long Island, New York late Friday night or early Saturday morning. The storm will then march through the heart of New England and end up in southeastern Quebec, Canada by early Sunday morning.

The storm will become a little better organized tonight and Friday with some intensification expected. However, the storm center will be too close to the coast for the system to become a more significant tropical cyclone and landfall will occur quick enough to limit the potential for additional development after Friday evening.

Rainfall of 3.00 to 5.00 inches will accompany the storm inland near and to the east of the storm center as it moves along and over the middle Atlantic Coast. Similar rainfall is expected in New England and southeastern New York. Some local flooding will be possible. Wind speeds are expected to be less than 50 mph until the storm moves inland and then they will diminish quickly.

Very little to no damage is expected from this storm, although there will be some disruption to shipping along the middle Atlantic Coast and some concern over local flooding is likely. No major agricultural areas will be seriously threatened by the storm.



Tropical Storm Fay To Reach New Jersey Friday

World Weather, Inc. forecasts and comments pertaining to present, past and future weather conditions included in this report constitute the corporation's judgment as of the date of this report and are subject to change without notice. Comments regarding damage or the impact of weather on agricultural and energy as well as comments made regarding the impact of weather on the commodity and financial markets are the explicit opinions of World Weather, Inc. World Weather, Inc. cannot be held responsible for decisions made by users of the Corporation's information in any business, trade or investment decision.

©2020 World Weather, Inc. Any unauthorized redistribution, duplication or disclosure is prohibited by law and will result in prosecution.