

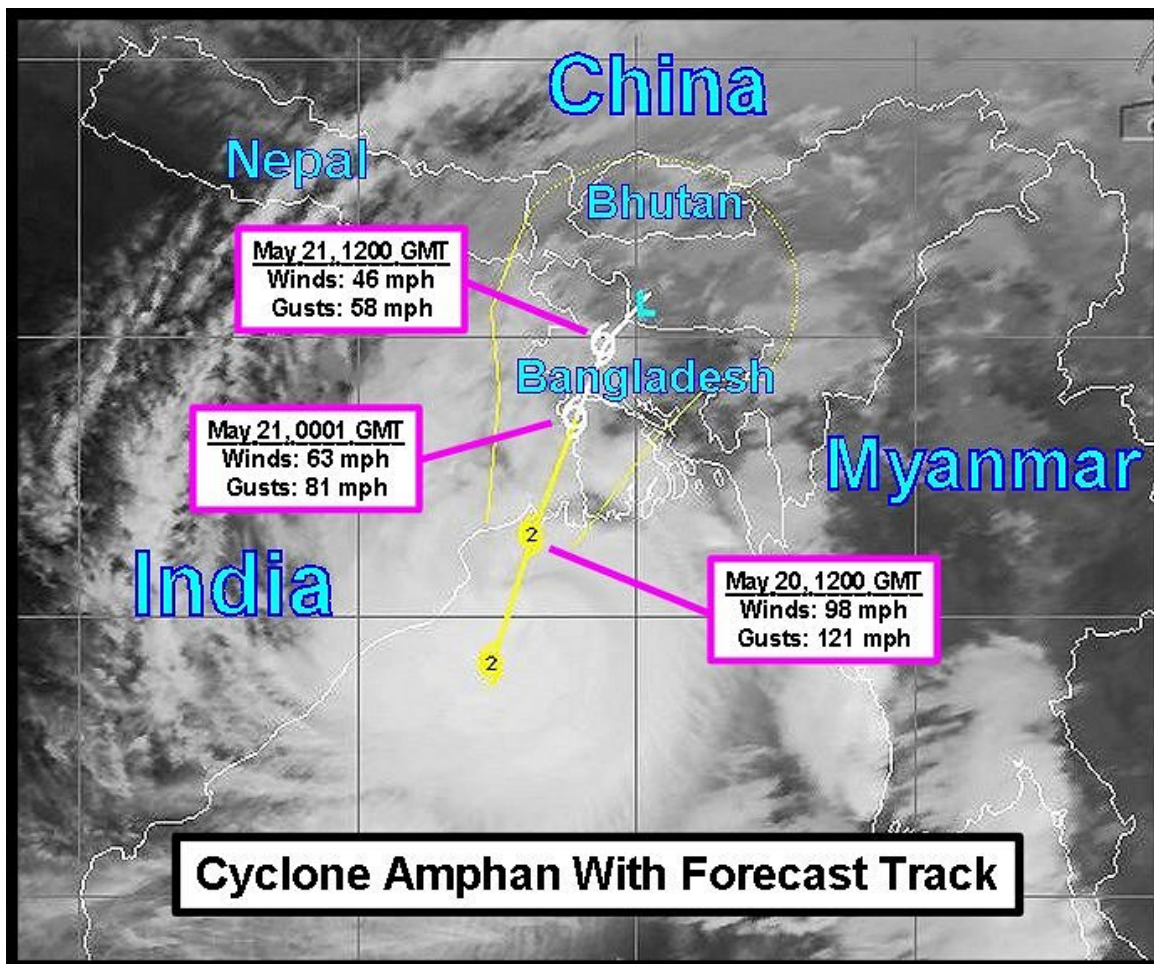
# Tropical Cyclone Amphan Making Landfall In West Bengal

By Brad Luchen and Drew Lerner

Kansas City, May 20 (World Weather Inc.) – [Tropical Cyclone Amphan will move inland as a Category 2 hurricane equivalent storm on the coast of West Bengal, India in the next few hours. The storm will cause a strip of significant rainfall today into Thursday from the southwestern part of West Bengal through northwestern Bangladesh. The storm will not only produce damage to crops and personal property because of excessive wind and flooding rain, but from a notable storm surge that will move through the Ganges River Delta as well. Damage to rice will be greatest, but some sugarcane damage is also expected.](#) Flooding may be more serious from the storm surge than from excessive rainfall.

---

At 0900 GMT today, Tropical Cyclone Amphan was located 129 miles south southwest of Kolkata moving north northeasterly at 16 mph while producing a maximum sustained wind speed of 98 mph with gusts to 120 mph. Hurricane force wind speed (greater than 74 mph) was occurring out 30 miles from the center of the storm while speeds of tropical storm force (39 to 74mph) were occurring out 150 miles.



## **Tropical Cyclone Amphan Making Landfall In West Bengal**

*The center of Tropical Cyclone Amphan will move over the coast of south-central West Bengal, India shortly after 1200 GMT today with maximum sustained winds of 98 mph and gusts as high as 121 mph.* The system will continue to move in a north-northeasterly direction today. It will be in northwestern Bangladesh by 0001 GMT Thursday. *Amphan will weaken rapidly later today and Thursday as it interacts with land and the Himalayan Mountains.*

New rainfall between 1200 GMT today and 1200 GMT Thursday will vary from 3.00 to 8.00 inches in a swath from central West Bengal through northwestern Bangladesh and central and western Meghalaya of India with locally more than 12.00 inches. *The rain will cause areas of flooding which will damage rice and sugarcane; though, flooding from the storm surge may cause more damage than flooding from the heavy rain.*

The storm may bring some loss of human and animal lives and will cause considerable damage to infrastructure. An assess of the damage will begin Friday into the weekend.

---

World Weather, Inc. forecasts and comments pertaining to present, past and future weather conditions included in this report constitute the corporation's judgment as of the date of this report and are subject to change without notice. Comments regarding damage or the impact of weather on agricultural and energy as well as comments made regarding the impact of weather on the commodity and financial markets are the explicit opinions of World Weather, Inc. World Weather, Inc. cannot be held responsible for decisions made by users of the Corporation's information in any business, trade or investment decision.

©2020 World Weather, Inc. Any unauthorized redistribution, duplication or disclosure is prohibited by law and will result in prosecution.