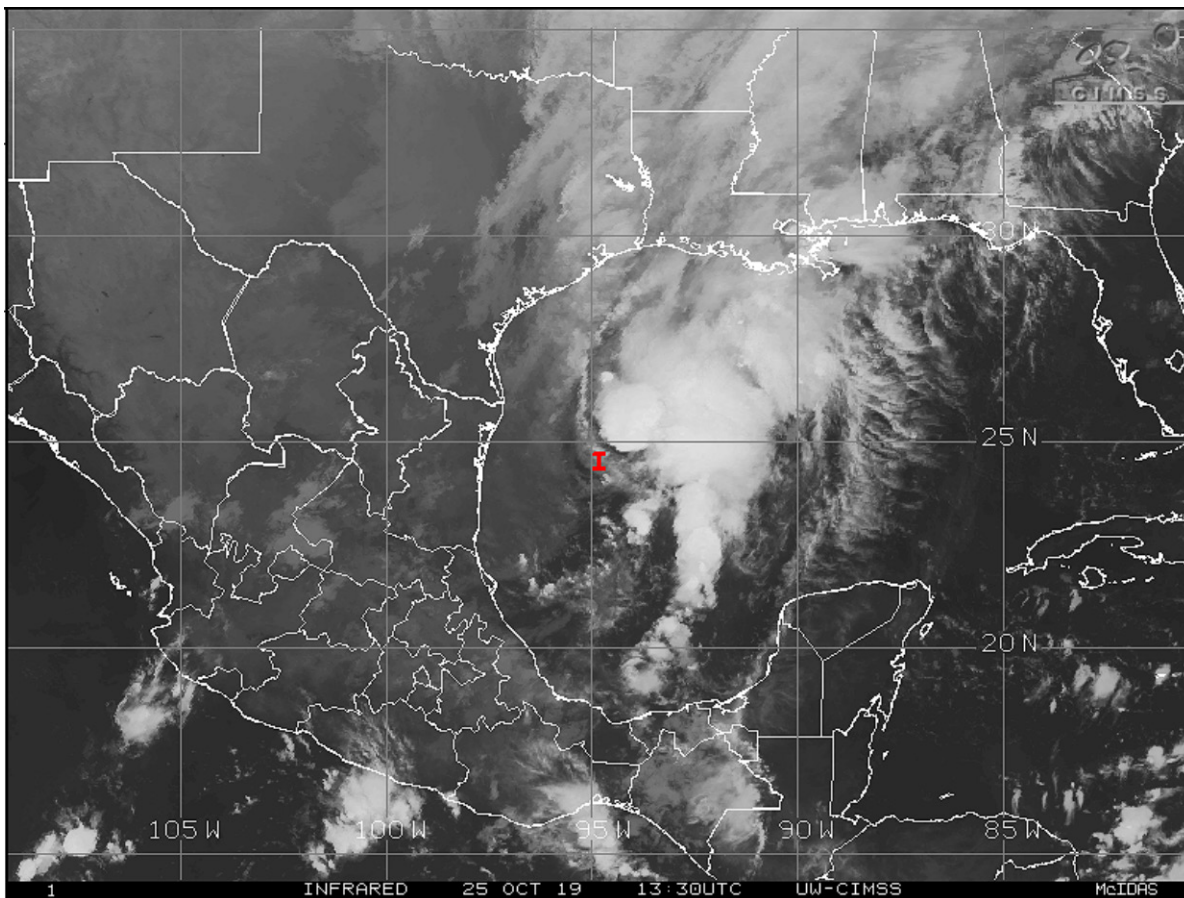


Depression in Gulf of Mexico May Reach Tropical Storm Status

By Drew Lerner

Kansas City, October 25 (World Weather Inc.) – [A tropical storm is now possibly developing in the Gulf of Mexico after recently declared as Tropical Depression Seventeen. The duration of tropical status for this storm system will be extremely brief – just long enough to be given a name. The storm’s tropical characteristics will be lost very quickly as the system begins merging with a mid-latitude frontal system moving through the mid-south region of the United States today and Saturday.](#) The storm and its remnants will impact summer crop harvest progress from the Louisiana coast through the Delta to the eastern Midwest and southeastern Canada.

At 1000 CDT today, the center of Tropical Depression 17 was located 320 miles south southwest of Lake Charles, LA at 25.6 north, 94.4 west moving northerly at 16 mph and producing maximum sustained wind speeds of 35 mph.

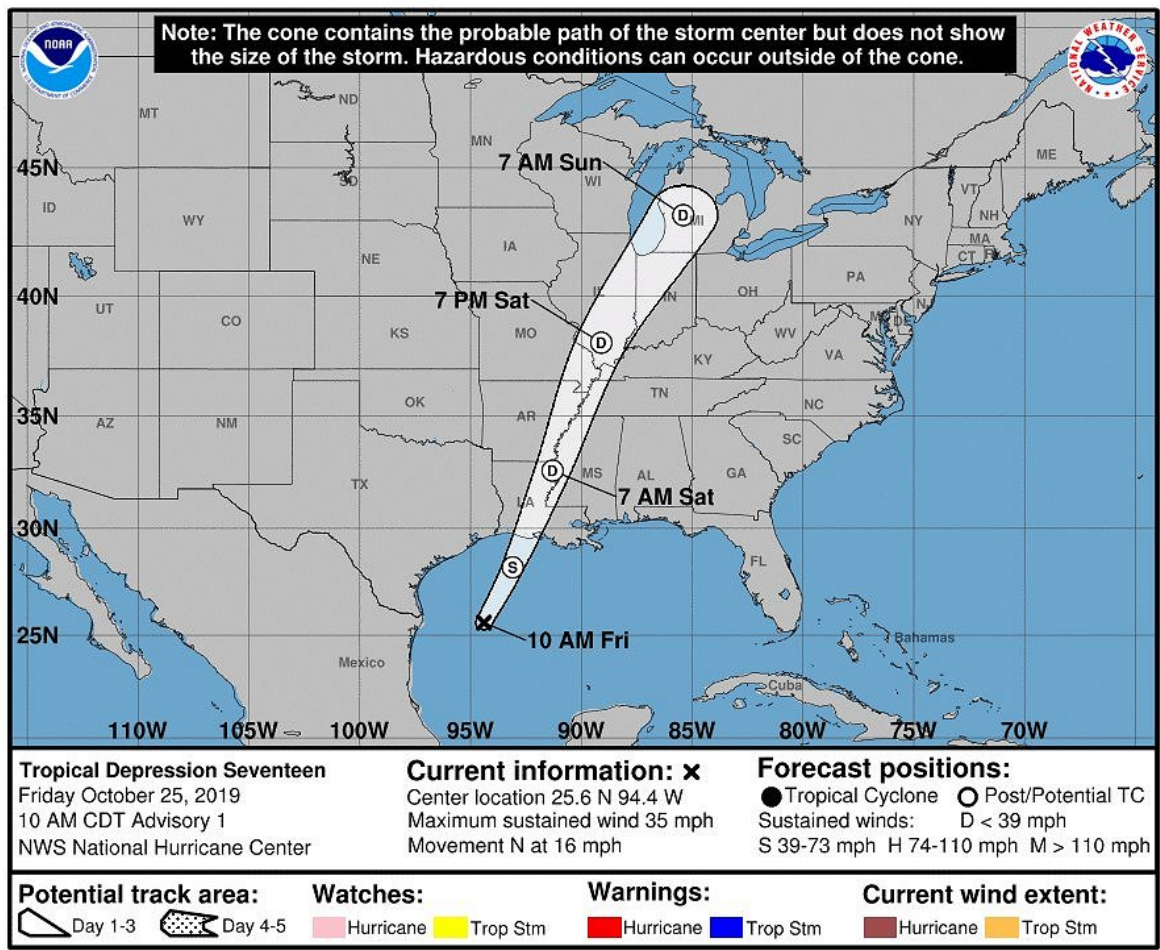


Depression 17 was expected to strengthen for a while this morning and early this afternoon and may reach tropical storm status early this afternoon before quickly losing its tropical characteristics later today and tonight as the system moves across south-central Louisiana and then northeast through the U.S. Delta to the Midwest this weekend. The warm, moist, air associated with the storm will interact with the cooler and drier air

Depression in Gulf of Mexico May Reach Tropical Storm Status

following the mid-latitude frontal system into the Delta tonight and Saturday resulting in some heavy rainfall. A few tornadoes and strong to severe thunderstorms will be possible to the east of the storm center impacting southeastern Louisiana and southern Mississippi.

Moisture totals of 1.00 to 3.00 inches and local totals of 3.00 to 5.00 inches are expected in association with this merged storm system through the weekend. Some of the greatest rainfall is expected in the Tennessee River Basin where some local flooding is possible. There may also be some heavy rain along the central and eastern Louisiana coast and in a few Delta locations.



Rain will disrupt farming activity from the harvest areas of sugarcane country in Louisiana to the cotton and soybean areas of the Delta and then in corn and soybean areas from the Midwest into Ontario and Quebec. Most of these crops will not be seriously impacted by the storm system, although delays in harvesting are likely and some cotton quality declines are possible. Some of the heaviest rain may beat cotton fiber from open bolls, but production losses should be minimal.

World Weather, Inc. forecasts and comments pertaining to present, past and future weather conditions included in this report constitute the corporation's judgment as of the date of this report and are subject to change without notice. Comments regarding damage or the impact of weather on agricultural and energy as well as comments made

Depression in Gulf of Mexico May Reach Tropical Storm Status

regarding the impact of weather on the commodity and financial markets are the explicit opinions of World Weather, Inc. World Weather, Inc. cannot be held responsible for decisions made by users of the Corporation's information in any business, trade or investment decision.

©2019 World Weather, Inc. Any unauthorized redistribution, duplication or disclosure is prohibited by law and will result in prosecution.