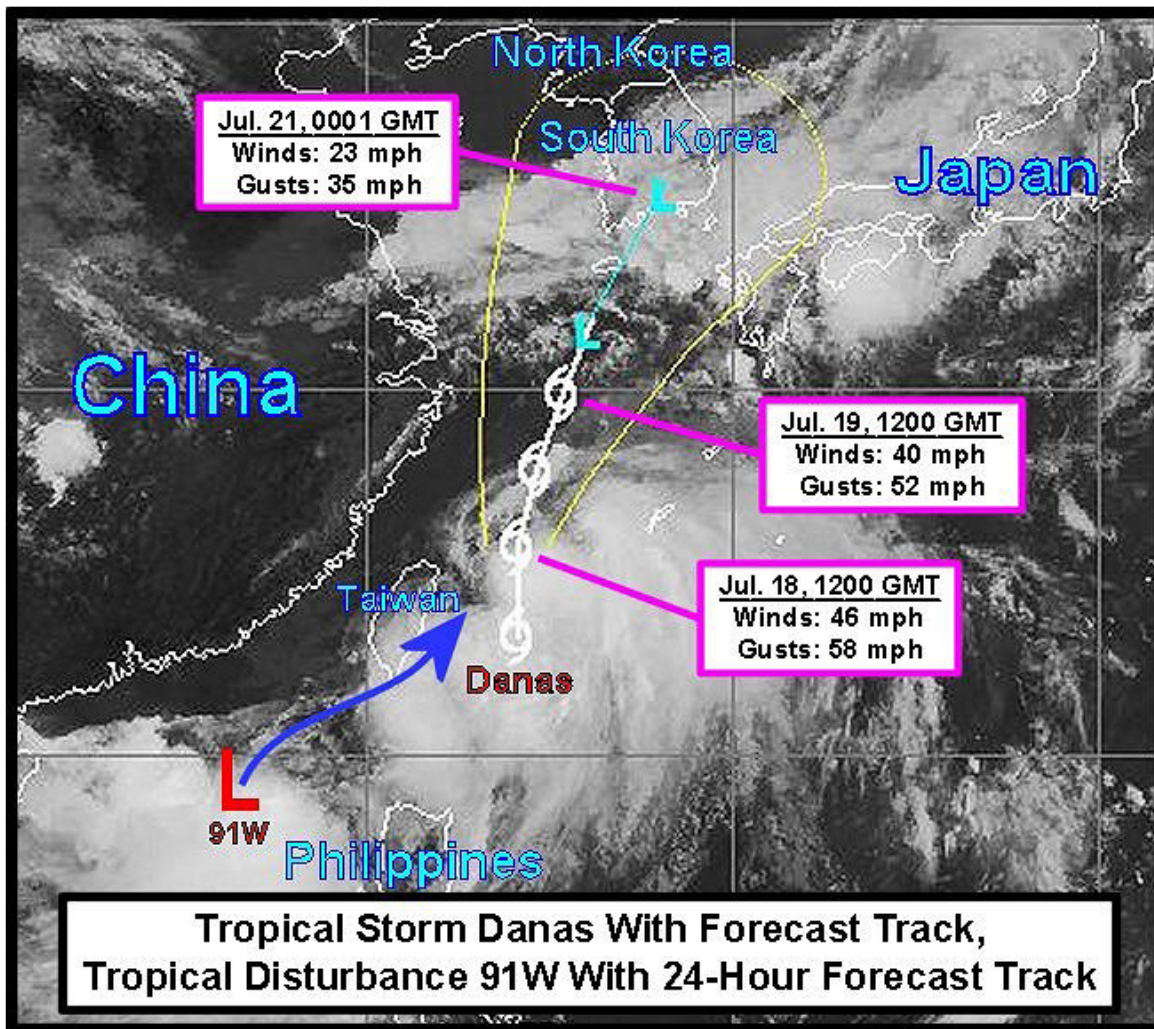


# Trop. Storm Danas To Eventually Impact South Korea, Japan

By Brad Luchen and Drew Lerner

Kansas City, July 18 (World Weather Inc.) – [Tropical Storm Danas \(or Falcon\) promoted some beneficial rain in Luzon Island of the Philippines in the last couple of days.](#) Some of the atmospheric energy from Danas split off to the west and is now a tropical disturbance being referred to as 91W, which will impact Taiwan mostly Friday. Tropical Storm Danas will move into the East China Sea Friday where it may weaken some and eventually promote heavy rain and gusty wind in portions of South Korea and Japan mostly Friday and Saturday.

At 0900 GMT today, Tropical Storm Danas (also known as Falcon) was located 200 miles west southwest of Okinawa, Japan at 26.3 north, 124.2 west moving northerly at 20 mph and producing a maximum sustained wind speed of 46 mph. Tropical storm force wind was occurring out 210 miles from the storm center.



Tropical Storm Danas passed Taiwan to the east overnight and entered the southern portions of the East China Sea. The system was expected to intensify briefly today while

## **Trop. Storm Danas To Eventually Impact South Korea, Japan**

continuing its northerly movement. A turn to the north northeast is expected tonight and will move across South Korea Friday at which time the system will be downgraded to depression status and will eventually dissipate in the western parts of the Sea of Japan this weekend.

The storm will spend most of its time over the East China Sea and should bring heavy rain to South Korea Friday into Saturday. Its area of rain and wind will be large enough to impact far western Japan and South Korea with windy conditions and some heavy rainfall. Wind speeds will stay below Typhoon status and rainfall near the storm center will vary from 3.00 to more than 12.00 inches. Kyushu, Japan will be most impacted by the storm, although several of the Ryukyu Islands of Japan will also experience some windy conditions, rough seas and heavy rainfall. *A few areas in western Honshu, Japan will also be impacted by the storm's rain along with the southeast half of South Korea. Flooding is expected in a few areas, but damage to rice and sugarcane in some of these areas is not likely to be very great.*

In the meantime, some of the convection associated with Danas broke away from the storm center and moved across northern Luzon Island, Philippines Wednesday and will possibly form a tropical depression today northeast of the island over the South China Sea. This disturbance will then move to the northeast and will bring some rain to Taiwan and the northeast part of Luzon Island today and Friday. No excessive rain is expected and the system will not likely hold together very long and should dissipate as it interacts with southern Taiwan and moves toward the Ryukyu Islands. No crop damage is expected from this system as it mostly stays mostly over water in the Luzon Strait as it moves toward the southern Ryukyu Islands. The system is likely to dissipate within a day or two.

---

World Weather, Inc. forecasts and comments pertaining to present, past and future weather conditions included in this report constitute the corporation's judgment as of the date of this report and are subject to change without notice. Comments regarding damage or the impact of weather on agricultural and energy as well as comments made regarding the impact of weather on the commodity and financial markets are the explicit opinions of World Weather, Inc. World Weather, Inc. cannot be held responsible for decisions made by users of the Corporation's information in any business, trade or investment decision.

©2019 World Weather, Inc. Any unauthorized redistribution, duplication or disclosure is prohibited by law and will result in prosecution.