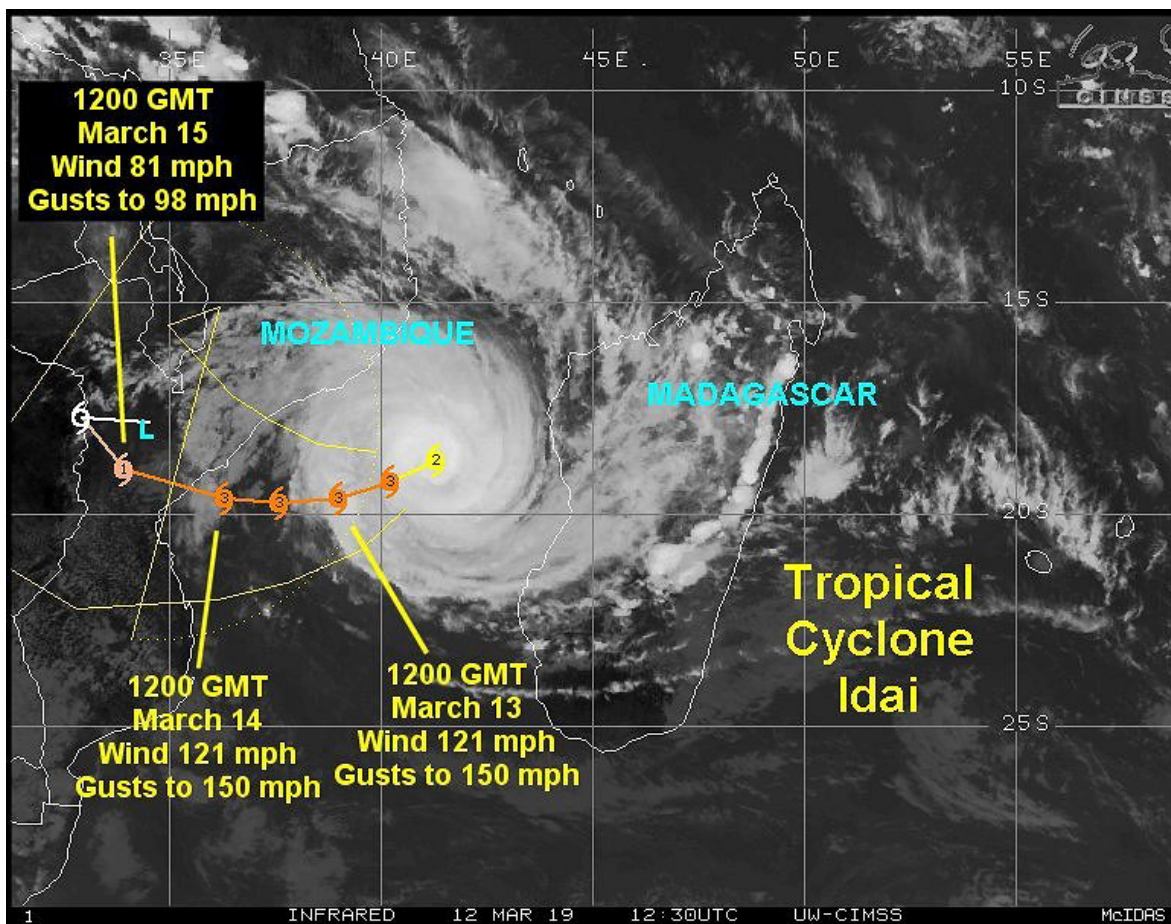


Tropical Cyclone Idai To Bring Heavy Rain To Mozambique

By Andrew Owen

Kansas City, March 12 (World Weather Inc.) – *Tropical Cyclone Idai was over the Mozambique Channel earlier this morning and will slowly track westerly in the coming days. Landfall over central Mozambique is expected near midday Thursday and Idai will continue drifting westerly through Friday. Although Idai is not as strong as previously advertised, heavy rain and strong wind speeds are likely for central Mozambique. Significant crop and structural damage is expected. Lingering showers will continue this weekend and will likely extend flooding in several locations.*

At 1500 GMT, Tropical Cyclone Idai was located near 18.8 south, 41.0 east, or 252 miles north-northeast of Europa Island. Movement was southwesterly at 8 mph during the previous six hours. Maximum sustained surface wind speeds were 104 mph near the storm center with gusts to of 127 mph. Hurricane force wind speeds (greater than 73 mph) were occurring out 35 miles away from the center of the storm while tropical storm force wind speeds (39 to 73 mph) were occurring out 138 miles.



Tropical Cyclone Idai will continue strengthening when traveling westerly over the Mozambique Channel today and Wednesday. Some weakening is expected before Idai makes landfall over central Mozambique near midday Thursday, though the disturbance will

Tropical Cyclone Idai To Bring Heavy Rain To Mozambique

remain a strong storm while moving inland. The system will slowly drift across Mozambique for the rest of the day Thursday and much of the day Friday before dissipating near the Zimbabwe border Saturday morning.

Rainfall will be greatest in central Mozambique as Tropical Cyclone Idai advances over the region Thursday and Friday, though lingering showers will produce rain over the weekend as well. Overall, *rainfall due to Idai will range from 6.00 to 12.00 inches with local amounts over 15.00 inches. A few locations along the coastline could receive more than 20.00 inches of rain.* Other portions of Mozambique and eastern Zimbabwe will receive 1.00 to 3.00 inches of rain with local amounts over 5.00 inches.

Strong wind speeds are initially expected across central Mozambique Thursday afternoon and evening. Sustained speeds will likely approach 100 mph with stronger gusts near the coastline before rapidly diminishing late Thursday and for much of the day Friday. Damaging winds are still expected at times Friday, though the strongest wind will occur as Idai initially makes landfall.

The combination of torrential rain, flooding and strong wind speeds will likely promote crop and structural damage in central Mozambique and a few neighboring areas. Although Mozambique is not a large crop producer, some rice, sugarcane, corn, sweet potato and other crops are still produced in the region that will be impacted by Tropical Cyclone Idai. Damage to these crops and many homes will result along with the potential for power outages and other infrastructural damage.

Significant storms like this one are rare for Mozambique and the impact on some of the nation could be very serious possibly resulting in some need for humanitarian aid.

World Weather, Inc. forecasts and comments pertaining to present, past and future weather conditions included in this report constitute the corporation's judgment as of the date of this report and are subject to change without notice. Comments regarding damage or the impact of weather on agricultural and energy as well as comments made regarding the impact of weather on the commodity and financial markets are the explicit opinions of World Weather, Inc. World Weather, Inc. can not be held responsible for decisions made by users of the Corporation's information in any business, trade or investment decision.

©2019 World Weather, Inc. Any unauthorized redistribution, duplication or disclosure is prohibited by law and will result in prosecution.